



**SEM**

## SEM TRAINERS & SYSTEMS

WHERE TIME MOVES AHEAD TO KEEP PACE WITH KNOWLEDGE

SEM- Scientific Educative Methods in Science, Engineering & Medicine

**Mobile :** +91 88495 63724

**Mobile 1:** +91 98791 03905

**Email:** sem@semtrainers.com

**Website:** www.semtrainers.com

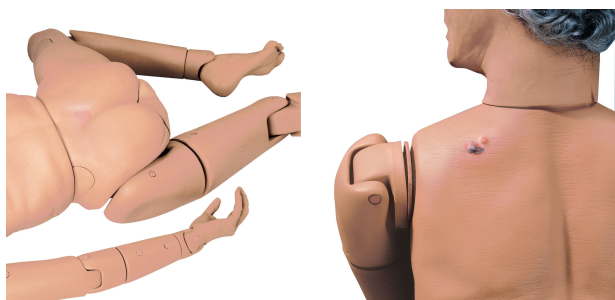
## KERi™ Complete Nursing Skills Manikin

Item No. LF04020U  
Weight 13.5kg  
Make: Nasco Healthcare, USA

[Read More](#)

**SKU:**

**Categories:**Male Examination



### Product Description

The Complete Nursing Skills Manikin KERi™ uses Life/form® molding and modeling techniques to provide an unusually realistic appearance without being age-specific. Life/ form® simulations have been included in KERi™ to allow the practice of more than 35 patient care procedures. The training manikin fulfill all OBRA requirements. **The following nursing and patient care procedures can be performed:**

- Prostate examination (Stage B)
- Ostomy Care (Ileostomy and colostomy lavage and suctioning)
- Tracheostomy care (lavage and suctioning)
- Placement of Nasogastric tubes
- Oral and nasal lavage, gavage and suctioning
- Enema administration (female), pap smears and douching
- Intramuscular Injection (arms, thigh, buttock)
- Oral hygiene (removable upper and lower denture)
- Eye irrigation, bed baths, hair care (washing, combing)
- Patient positioning and transfer techniques, clothing changes
- Ear irrigation and hearing aid placement and removal
- Bandaging and wound dressing (including fingers and toes)
- Urinary Catheterization - Female and Male (Uncircumcised)

**Visual Inspection Features include:**

- Decubitus Sacral Ulcer - Stage 1
- Dilated Pupil Comparison
- Cancerous Mole Comparison
- Reddened Skin Folds

**Complete Range of Motion include:**

- Trunk - Rotation, Hyperextension
- Neck - Rotation, Hyperextension, Lateral Flexion
- [Shoulder](#) and hip- Abduction, Adduction, Rotation, Hyperextension
- Elbow - Extension, Flexion, Pronation, Supination
- Knee - Extension, Flexion
- Wrist - Flexion, Hyperextension, Radial Flexion, Ulnar Flexion
- Ankle - Eversion, Inversion, Dorsiflexion, Plantarflexion
- Fingers and toes - Abduction, Adduction, Flexion (soft, lifelike material)

**For additional training benefits:** Add the optional [IV Arm Attachment](#) and [Blood Pressure Arm](#)  
**The manikin is delivered with:**

- Male and Female Genitalia
- Wig
- Dentures
- Hearing Aid
- \*12 cc Syringe

- Lubricant Spray
- Fluid Drainage Basin
- Stomach Reservoir Bag
- Bladder Reservoir Bag
- Bladder Reservoir Pressure Sleeve
- 16 FR Foley Silicone Catheter
- \*140 cc Syringe
- Enema Reservoir Bag

Delivered in a storage carton. Carry case not included.

	<b>Basic:</b> KERi™ <a href="#">1020187</a> GERi™ <a href="#">1005620</a>	<b>Complete:</b> KERi™ <a href="#">1013742</a> GERi™ <a href="#">1005597</a>	<b>Advanced:</b> KERi™ <a href="#">1017567</a> GERi™ <a href="#">1005606</a>	<b>Auscultation:</b> KERi™ <a href="#">1020147</a> GERi™ <a href="#">1020146</a>
Skin inspection and care	Yes	Yes	Yes	Yes
Bandaging	Yes	Yes	Yes	Yes
Washing	Yes	Yes	Yes	Yes
Denture Placement	Yes	Yes	Yes	Yes
Hearing aid placement	Yes	Yes	Yes	Yes
Ear and eye irrigation	Yes	Yes	Yes	Yes
Ostomy and tracheostomy care	Yes	Yes	Yes	Yes
Positioning and transfer techniques	Yes	Yes	Yes	Yes
Pericare	Yes	Yes	Yes	Yes
Intramuscular injections	Yes	Yes	Yes	Yes
Gastrostomy	-	Yes	Yes	Yes
Pap smears and douching	-	Yes	Yes	Yes
Enema administration	-	Yes	Yes	Yes
Prostate exam	-	Yes	Yes	Yes
Urinary catheterisation	-	Yes	Yes	Yes
Nasogastric tube placement	-	Yes	Yes	Yes
IV insertion	-	-	Yes	
Blood pressure monitoring	-	-	Yes	
Recognition of heart sounds	-	-	-	Yes
Recognition of lung sounds	-	-	-	Yes