



**SEM**

## SEM TRAINERS & SYSTEMS

WHERE TIME MOVES AHEAD TO KEEP PACE WITH KNOWLEDGE

SEM- Scientific Educative Methods in Science, Engineering & Medicine

**Mobile :** +91 88495 63724  
**Mobile 1:** +91 98791 03905

**Email:** sem@semtrainers.com  
**Website:** www.semtrainers.com

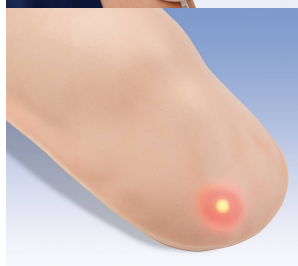
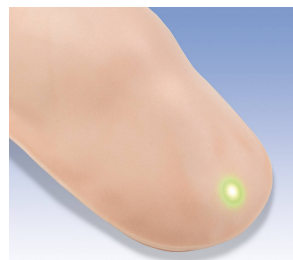
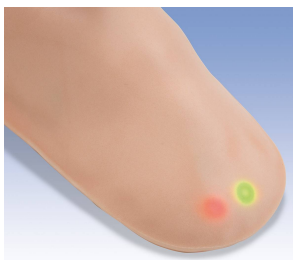
## I.M. Injection Simulator

Item No. 1008941 [W30502/1]  
Weight 0.45 kg  
MPN: M118-1

[Read More](#)

**SKU:**

**Categories:** Intramuscular (I.m.) and Intradermal



## Product Description

The student can use this injection simulator to practice both intramuscular and subcutaneous injections in the upper arm. The simulator can be attached easily using the stick-on tape. The student can find the injection site by feeling for the acromion. LED lights will show whether the injection has been inserted in the correct place to the right depth. The warning signal will sound if the injection is carried out incorrectly. Water only should be used for injecting. The delivery contents include the liquid pouch and the stick-on tape.