



SEM

SEM TRAINERS & SYSTEMS

WHERE TIME MOVES AHEAD TO KEEP PACE WITH KNOWLEDGE

SEM- Scientific Educative Methods in Science, Engineering & Medicine

Mobile : +91 88495 63724

Mobile 1: +91 98791 03905

Email: sem@semtrainers.com

Website: www.semtrainers.com

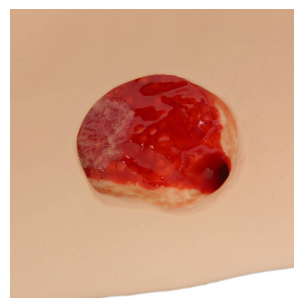
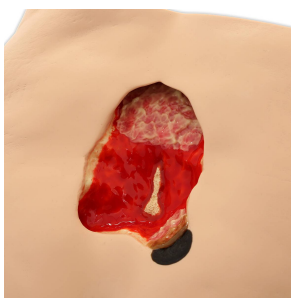
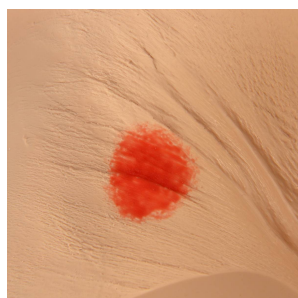
Seymour II™ Wound Care Simulator

Item No. 1009798 [W46500/1]
Weight 2.51 kg
Dimensions 30.5 x 30.5 x 15.2 cm
Brand VATA
MPN: 910

[Read More](#)

SKU:

Categories: Geriatric Patient Care



Product Description

The Seymour II™ Wound Care Simulator has been redesigned and now made with a new flexible, life-like material that permits the application and easy removal of dressings, without leaving an adhesive residue. Still the most comprehensive model of its kind, molded from a 74-year-old patient, looks and feels like the real thing. Displaying the following pressure ulcers* (NPUAP 2007 - National Pressure Ulcer Advisory Panel): Stage I, Stage II, Stage III with undermining, tunneling, subcutaneous fat and slough, deep Stage IV with exposed bones, undermining, tunneling, subcutaneous fat, eschar and slough. Also shown are a suspected DTI (Deep Tissue Injury), unstageable full eschar/slough wound,

and a dehiscent wound. The Stage III and Stage IV are positioned so that a “bridging” dressing for use with a vacuum assisted closure and negative pressure wound therapy devices can be demonstrated and practiced. This model makes it possible to visualize and understand the differences in wounds. Great care has been taken to color each wound just as you would see it on a patient. You are able to demonstrate and practice wound cleansing, classification, staging, and assessment, as well as the measurement of wound length, depth, undermining, and tunneling. The positioning of the wounds permits multiple dressings to be demonstrated at the same time.