



SEM

SEM TRAINERS & SYSTEMS

WHERE TIME MOVES AHEAD TO KEEP PACE WITH KNOWLEDGE

SEM- Scientific Educative Methods in Science, Engineering & Medicine

Mobile : +91 88495 63724
Mobile 1: +91 98791 03905

Email: sem@semtrainers.com
Website: www.semtrainers.com

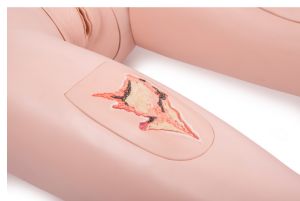
3B Scientific® Patient Care Manikin PRO

Item No. 1018816 [P10/1]
Weight 15.5kg
Dimensions 174 cm
Brand 3B Scientific

[Read More](#)

SKU:

Categories:Ostomy Care



Product Description

Build and evaluate patient care and nurse aid competencies! The 3B Scientific® Patient Care Manikin PRO for simulation in healthcare was developed for scenario based training of patient care and advanced nursing skills. The patient care manikin simulates an **adult, life-size patient**, with interchangeable genitals. It can be positioned like a real patient with natural movement of the arms, legs, and joints. You can even make the patient care manikin sit upright in the bed for treatments. It is made of durable, unbreakable, and water-resistant plastics for longevity in the everyday training use. The following clinical nursing and patient care skills and competencies can be trained and evaluated:

Patient and personal care:

- Transfer skills: lifting, carrying, and moving a patient
- Bed care of a patient
- Position changing and alignment of a patient
- Bathing a patient (genital care)
- Hair care (washing, combing, drying)
- Care and cleaning of eyes, ears and nose
- Personal hygiene and mouth denture care (partially removable prosthesis)
- Bandaging (includes amputation stump)
- Wound treatment and care (surgical staple seam, laceration and abrasions)
- Communication skills, especially step by step explanation of care measures

Medical care:

- Prevention of bedsores (Decubitus)
- Decubitus evaluation (stages 2-4)
- Decubitus care
- Prevention of muscle cramps
- Prevention of pneumonia
- Prevention of blood clots (Thromboses)
- Prevention of healthcare associated infection (HAI) by measures of medical asepsis and clean techniques
- Inhalation therapy
- Oxygen inhalation
- Use of ventilation bag (mouth to mouth and mouth to nose)
- Artificial respiration, oxygen treatment
- Care of tracheostomy
- Care of Diabetic Foot Syndrome (DFS)
- Ostomy care (colostomy)

- Irrigation of eyes and ears
- Intramuscular injections (buttocks)
- Subcutaneous injections (upper arms and thighs)
- Subcutaneous infusions

The **PRO** version includes removable organs for these **additional patient care training features**:

- Enema administration
- Male catheterization CH14
- Female catheterization CH 14
- Gastric (stomach) lavage
- Intestinal irrigation
- Irrigation of the bladder
- Irrigation of the vagina

Medical simulation training in healthcare: Training with the 3B Scientific® Patient Care Manikin PRO meets the OBRA requirements of Nurse Aide Training and Competency Evaluation Programs (NATCEP). **Delivered with:** Organs (lungs, heart, stomach, bladder and intestinal section), injection pads (upper arm, thigh, and buttocks), intestine tube, catheter, duodenal probe, talcum powder, Vaseline, lubricant, amputation stump, inserts with wound depictions (upper arm and thigh), and tools for fitting. The 3B Scientific® Patient Care Manikin is also available in a BASIC version, which comes without the above mentioned PRO features. **Please note** that the replacement parts of the updated 3B Scientific® Patient Care Manikin PRO also fit the older versions with the item number P10 / 1000502 (3B Scientific® Patient Care Manikin, I) or P11 / 1000503 (3B Scientific® Patient Care Manikin, II), a fitting tool will be delivered with the replacement parts.

	Susie Simon® Nursing Care Simulator	Susie Simon® Nursing Care Simulator	Simple Simon® Nursing Care Simulator	Simple Simon® Nursing Care Simulator	3B Scientific® Patient Care Manikin PRO
Item No.	without ostomy: 1017535	with ostomy: 1005785	without ostomy: 1005803	without ostomy: 1005807	1018816
Gender	male and female	male and female	female	male	male and female
Wig for hair care	Yes	Yes	Yes	-	Yes
Movable jaw with tongue	Yes	Yes	Yes	Yes	Yes
Removable dentures	Yes	Yes	Yes	Yes	Yes
Ear irrigation	Yes	Yes	Yes	Yes	Yes
Nasogastric lavage and gavage	Yes	Yes	-	-	Yes
Tracheotomy care	-	-	-	Yes	Yes
IM sites at upper arm and in buttock	Yes	Yes	Yes	Yes	Yes
IM site at the upper legs	-	-	-	-	Yes

Enema administration	Yes	Yes	-	-	Yes
Catheterization	Yes	Yes	-	-	Yes
Realistic vagina and cervix	Yes	Yes	Yes	-	-
Vaginal douching and pap smear	Yes	Yes	-	-	-
Sculpted stomas	-	Yes	Yes	-	Yes
Surgical & amputation wound	-	-	-	-	Yes
Diabetic foot & decubitus ulcers	-	-	-	-	Yes
Laceration wound	-	-	-	-	Yes
Detachable and removable internal tanks	Yes	Yes	-	Yes	Yes
Transverse colostomy, ileostomy, and suprapubic stoma	-	Yes	-	-	only colostomy