



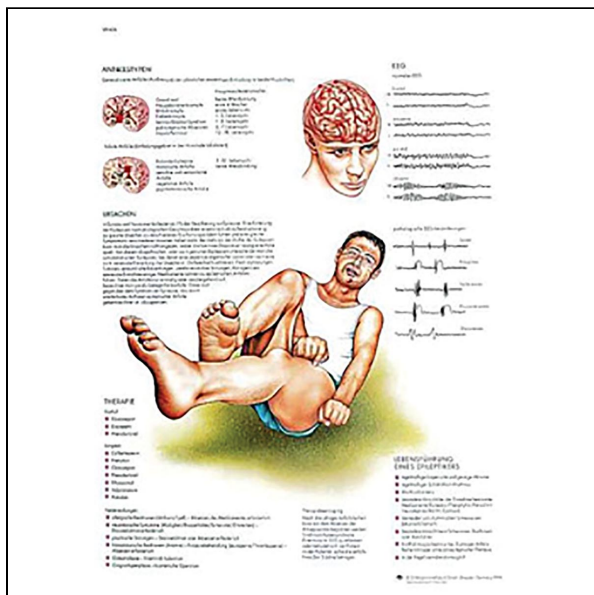
## SEM TRAINERS & SYSTEMS

WHERE TIME MOVES AHEAD TO KEEP PACE WITH KNOWLEDGE

SEM- Scientific Educative Methods in Science, Engineering & Medicine

**Mobile :** +91 88495 63724  
**Mobile 1:** +91 98791 03905

**Email:** sem@semtrainers.com  
**Website:** www.semtrainers.com



## Epilepsie

Item No. 1001757 [VR2626L]  
Weight 0.15 kg  
Dimensions 50 x 67 cm  
Brand 3B Scientific  
ISBN 978-3-82-940750-2

[Read More](#)

**SKU:**

**Categories:** Brain and Nervous system

## Product Description

This thickly laminated anatomical chart is printed on premium glossy (200 g) UV resistant paper and comes with 2 sided lamination (75 micron) . It comes in a convenient poster size 50 x 67 cm (20x26") and can be written on and wiped off with non permanent markers. The 75 micron lamination ensures the chart does not curl up at the edges and the UV treatment ensures the chart does not get a faded yellow color over time.