



SEM

SEM TRAINERS & SYSTEMS

WHERE TIME MOVES AHEAD TO KEEP PACE WITH KNOWLEDGE

SEM- Scientific Educative Methods in Science, Engineering & Medicine

Mobile : +91 88495 63724

Mobile 1: +91 98791 03905

Email: sem@semtrainers.com

Website: www.semtrainers.com

KERi™ Complete Nursing Skills Manikin

Item No. 1013742 [W44075]

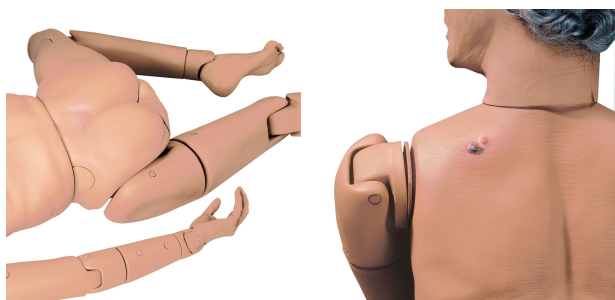
Weight 13.5 kg

MPN: LF04020U

[Read More](#)

SKU:

Categories: Injections and Punctures



Product Description

The Complete Nursing Skills Manikin KERi™ uses Life/form® molding and modeling techniques to provide an unusually realistic appearance without being age-specific. Life/ form® simulations have been included in KERi™ to allow the practice of more than 35 patient care procedures. The training

manikin fulfill all OBRA requirements.

The following nursing and patient care procedures can be performed:

- Prostate examination (Stage B)
- Ostomy Care (Ileostomy and colostomy lavage and suctioning)
- Tracheostomy care (lavage and suctioning)
- Placement of Nasogastric tubes
- Oral and nasal lavage, gavage and suctioning
- Enema administration (female), pap smears and douching
- Intramuscular Injection (arms, thigh, buttock)
- Oral hygiene (removable upper and lower denture)
- Eye irrigation, bed baths, hair care (washing, combing)
- Patient positioning and transfer techniques, clothing changes
- Ear irrigation and hearing aid placement and removal
- Bandaging and wound dressing (including fingers and toes)
- Urinary Catheterization - Female and Male (Uncircumcised)

Visual Inspection Features include:

- Decubitus Sacral Ulcer - Stage 1
- Dilated Pupil Comparison
- Cancerous Mole Comparison
- Reddened Skin Folds

Complete Range of Motion include:

- Trunk - Rotation, Hyperextension
- Neck - Rotation, Hyperextension, Lateral Flexion
- [Shoulder](#) and hip- Abduction, Adduction, Rotation, Hyperextension
- Elbow - Extension, Flexion, Pronation, Supination
- Knee - Extension, Flexion
- Wrist - Flexion, Hyperextension, Radial Flexion, Ulnar Flexion
- Ankle - Eversion, Inversion, Dorsiflexion, Plantarflexion
- Fingers and toes - Abduction, Adduction, Flexion (soft, lifelike material)

For additional training benefits:

Add the optional [IV Arm Attachment](#) and [Blood Pressure Arm](#)

The manikin is delivered with:

- Male and Female Genitalia
- Wig
- Dentures
- Hearing Aid
- *12 cc Syringe
- Lubricant Spray
- Fluid Drainage Basin
- Stomach Reservoir Bag
- Bladder Reservoir Bag
- Bladder Reservoir Pressure Sleeve
- 16 FR Foley Silicone Catheter
- *140 cc Syringe
- Enema Reservoir Bag

Delivered in a storage carton. Carry case not included.

	Basic: KERi™ 1020187 GERi™ 1005620	Complete: KERi™ 1013742 GERi™ 1005597	Advanced: KERi™ 1017567 GERi™ 1005606	Auscultation: KERi™ 1020147 GERi™ 1020146
Skin inspection and care	✓	✓	✓	✓
Bandaging	✓	✓	✓	✓
Washing	✓	✓	✓	✓
Denture Placement	✓	✓	✓	✓
Hearing aid placement	✓	✓	✓	✓
Ear and eye irrigation	✓	✓	✓	✓
Ostomy and tracheostomy care	✓	✓	✓	✓
Positioning and transfer techniques	✓	✓	✓	✓
Pericare	✓	✓	✓	✓
Intramuscular injections	✓	✓	✓	✓
Gastrostomy	-	✓	✓	✓
Pap smears and douching	-	✓	✓	✓
Enema administration	-	✓	✓	✓
Prostate exam	-	✓	✓	✓
Urinary catheterisation	-	✓	✓	✓
Nasogastric tube placement	-	✓	✓	✓
IV insertion	-	-	✓	

Blood pressure monitoring	-	-	✓	
Recognition of heart sounds	-	-	-	✓
Recognition of lung sounds	-	-	-	✓