



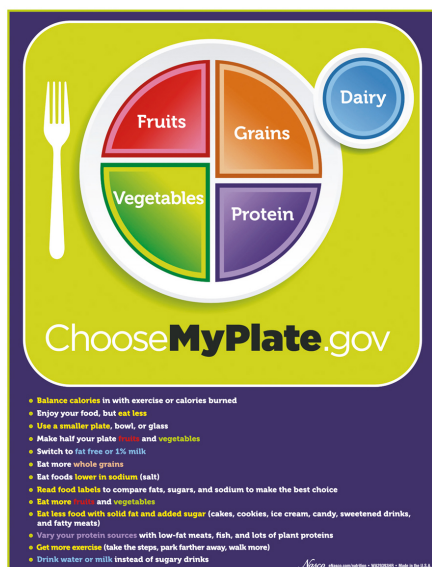
## SEM TRAINERS & SYSTEMS

WHERE TIME MOVES AHEAD TO KEEP PACE WITH KNOWLEDGE

SEM- Scientific Educative Methods in Science, Engineering & Medicine

**Mobile :** +91 88495 63724  
**Mobile 1:** +91 98791 03905

**Email:** sem@semtrainers.com  
**Website:** www.semtrainers.com



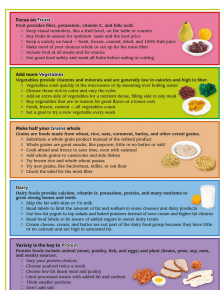
## MyPlate Tear Pad with Food Group Tips

**Item No.** 1018321 [W44791TP]  
**Weight** 0.325 kg  
**Dimensions** 0 x 0 x 0 cm  
**MPN:** WA29393

[Read More](#)

**SKU:**

**Categories:** Nutrition Education



## Product Description

The tear pad front shows the MyPlate image while the back gives tips for eating wisely in all five food groups. A simple concise tool to use in nutrition education and send home with each participant. Pad of 50 sheets, each 8.5 x 11."