



SEM

SEM TRAINERS & SYSTEMS

WHERE TIME MOVES AHEAD TO KEEP PACE WITH KNOWLEDGE

SEM- Scientific Educative Methods in Science, Engineering & Medicine

Mobile : +91 88495 63724
Mobile 1: +91 98791 03905

Email: sem@semtrainers.com
Website: www.semtrainers.com

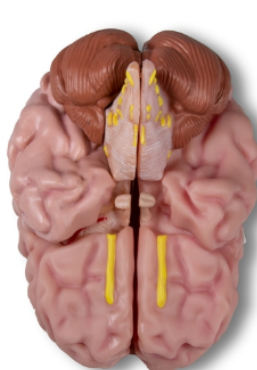
Anatomical brain model, life-size, 5 parts - EZ Augmented Anatomy

Item No. C918
Weight
Brand Erler Zimmer, Germany

[Read More](#)

SKU:

Categories:Brain Models



Product Description

This life-sized brain model is carefully painted in realistic color depicting the major anatomy of the brain. The left half comes apart in four pieces- the frontal and parietal, the temporal and occipital, the

brainstem, and the cerebellum. The brainstem includes the trigeminal nerve (V), abducens nerve (VI), vestibulocochlear nerve (VIII), facial and intermediate nerves (VII), trochlear nerve (IV), olfactory nerve (I), glossopharyngeal nerve (IX), vagus nerve (X), accessory nerve (XI), cervical ventral roots, and hypoglossal nerve (XII). The hippocampus is attached to the brainstem to show the relation of the hippocampus to the fornix and mammillary body in the brainstem. The choroid plexus is also shown. This model fits perfectly in our skull models ref.no. 4500, 4505, 4508, 4509, 4512, 4514, 4701 and 4708 and is compatible with the Falx cerebri model ref.no. C925.