

**SEM**

SEM TRAINERS & SYSTEMS

WHERE TIME MOVES AHEAD TO KEEP PACE WITH KNOWLEDGE

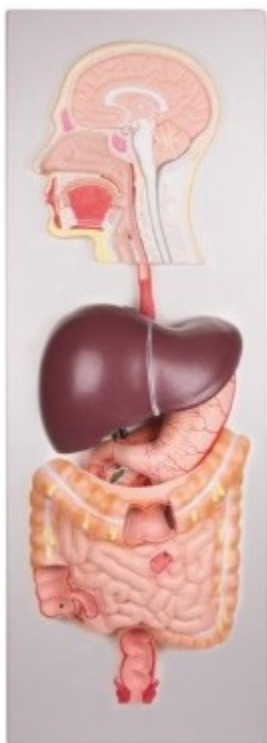
SEM- Scientific Educative Methods in Science, Engineering & Medicine

Mobile : +91 88495 63724

Mobile 1: +91 98791 03905

Email: sem@semtrainers.com

Website: www.semtrainers.com



Human digestive system, 5 parts

Item No. K221

Weight

Brand Erler Zimmer, Germany

[Read More](#)

SKU:

Categories:Digestive System

Product Description

This life size model shows the human digestive tract from mouth cavity to rectum. The oral cavity, the pharynx and the first part of the esophagus are dissected along the medial sagittal plane. The liver is shown together with the gall bladder and is removable. The removable pancreas and duodenum are dissected to expose internal features. The stomach is removable and can be dismantled into two parts,

the duodenum, caecum, part of the small intestine, large intestine and the rectum are open to expose the interior. Mounted on board. Size: 90 x 31 x 13 cm