



**SEM**

## SEM TRAINERS & SYSTEMS

WHERE TIME MOVES AHEAD TO KEEP PACE WITH KNOWLEDGE

SEM- Scientific Educative Methods in Science, Engineering & Medicine

**Mobile :** +91 88495 63724  
**Mobile 1:** +91 98791 03905

**Email:** sem@semtrainers.com  
**Website:** www.semtrainers.com

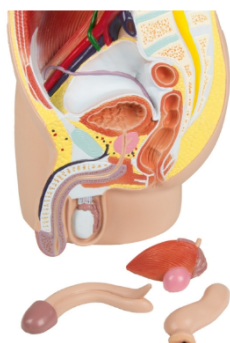
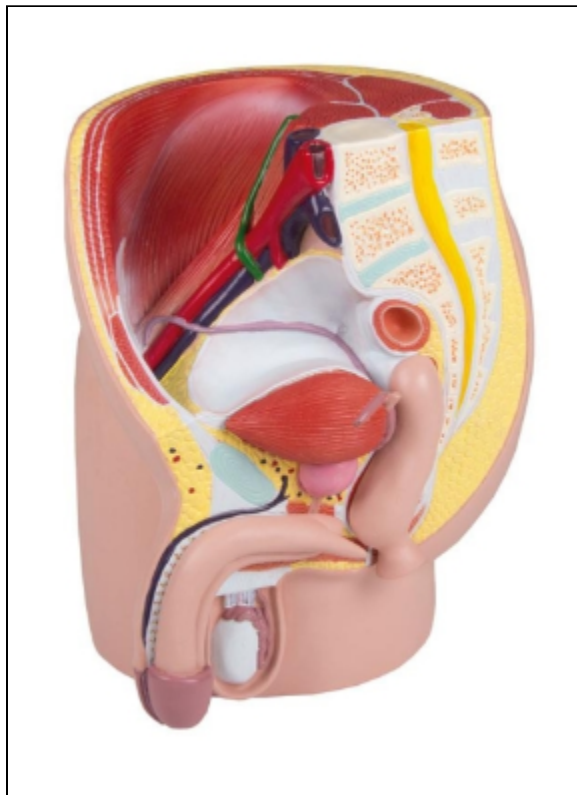
### Male Pelvis, life size, 4-part

Item No. H211  
Weight 1 kg  
Brand Erler Zimmer, Germany

[Read More](#)

**SKU:**

**Categories:** Genital and Pelvis Models



## Product Description

This life size model is median sagittal sectioned and shows the male pelvis in 4 parts. Additional to muscles and vessels of the abdomen it depicts particularly the urogenital organs. Removable are one half of the cavernous body, one half of the bladder with prostate and one half of bowel with rectum.

Size: 21 x 19 x 25 cm, weight: approx. 1 kg