



SEM

SEM TRAINERS & SYSTEMS

WHERE TIME MOVES AHEAD TO KEEP PACE WITH KNOWLEDGE

SEM- Scientific Educative Methods in Science, Engineering & Medicine

Mobile : +91 88495 63724
Mobile 1: +91 98791 03905

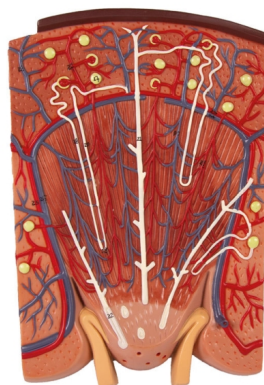
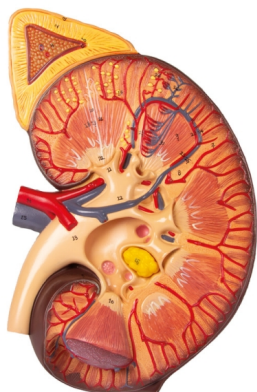
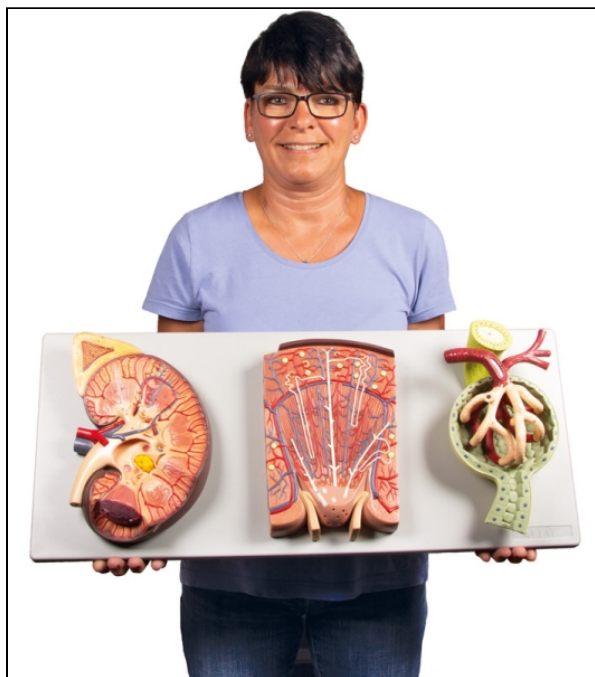
Email: sem@semtrainers.com
Website: www.semtrainers.com

Kidney Section with Renal Nephron and Renal Corpuscle

[Read More](#)

SKU:

Categories:Urinary System



Product Description

This 3 models set shows the basic structure of the kidney. We can find as a first model a frontal section of the kidney, enlarged 3 times, illustrates adrenal gland, cortex, medulla, pyramids with papillae, renal pelvis and blood vessels. The second model, representing a nephron enlarged 120 times, shows renal tubules, a collecting tube system and Henle's loop. The third one illustrates Malpighian corpuscle with the Bowman's capsule, 700 times life size. All these models are a great instrument to understand the kidney anatomy in all the inner details. The three models are mounted on board. Size: 70 x 29 x 12 cm, Weight: 4.1 kg