



SEM

SEM TRAINERS & SYSTEMS

WHERE TIME MOVES AHEAD TO KEEP PACE WITH KNOWLEDGE

SEM- Scientific Educative Methods in Science, Engineering & Medicine

Mobile : +91 88495 63724
Mobile 1: +91 98791 03905

Email: sem@semtrainers.com
Website: www.semtrainers.com

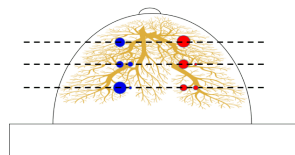
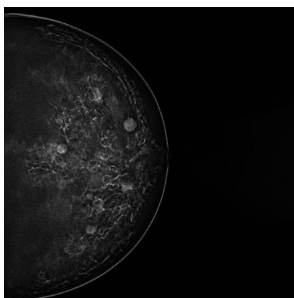
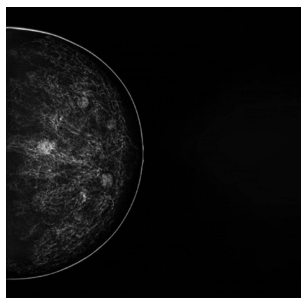
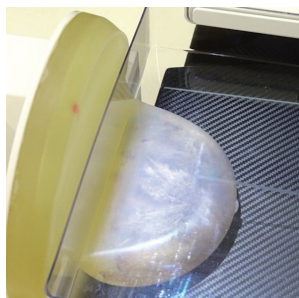
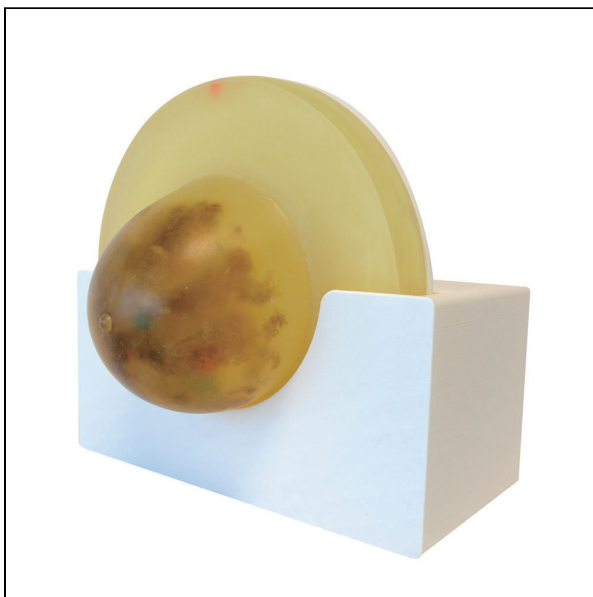
Compressible Mammography Phantom Comp-AY

Item No. PH-83
Weight
Brand KYOTO KAGAKU, JAPAN

[Read More](#)

SKU:

Categories:Radiology Phantom



Product Description

Allows for thorough visual evaluation under a variety of scanning conditions and image comparison of different modalities

Features

Training skills / Applications

Size (approx.)

Weight (approx.)

Materials

Update

Soft and resilient material of the phantom allows breast compression for imaging. Three-dimensional structure of simulated mammary gland fibers and tumors to visualize realistic medical images. Allows for visual evaluation under different scanning conditions and locations of tumors Allows for image comparison of different modalities
Tomosynthesis Mammography Evaluation and study of effect of breast compression on image quality Patient Positioning
W30 x D27 x H24 cm
3.1kg(excluding weight), 2.5kg(phantom only)
polyurethane
March 19, 2024