



**SEM**

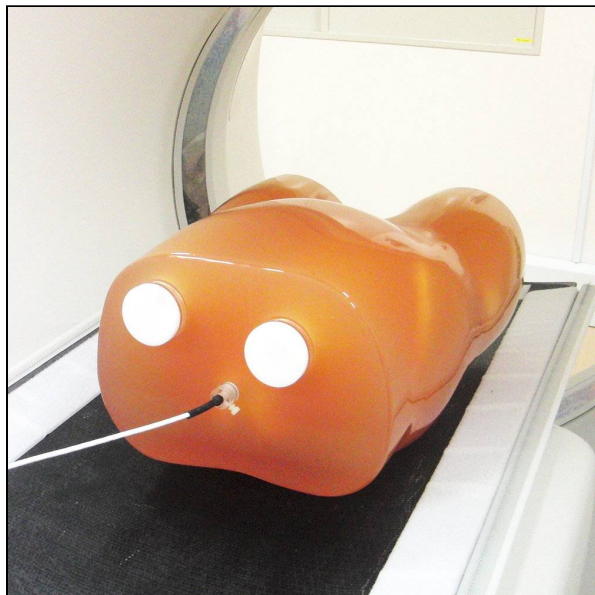
## SEM TRAINERS & SYSTEMS

WHERE TIME MOVES AHEAD TO KEEP PACE WITH KNOWLEDGE

SEM- Scientific Educative Methods in Science, Engineering & Medicine

**Mobile :** +91 88495 63724  
**Mobile 1:** +91 98791 03905

**Email:** sem@semtrainers.com  
**Website:** www.semtrainers.com



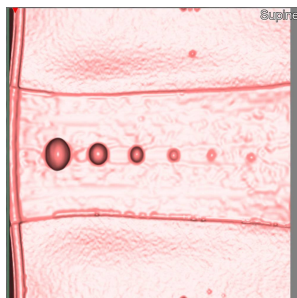
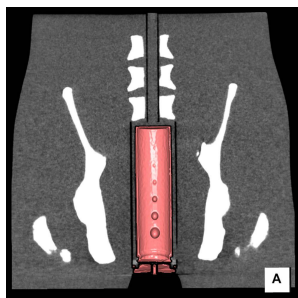
## CT Colonography Phantom NCCS

Item No. PH-49  
Weight  
Brand KYOTO KAGAKU, JAPAN

[Read More](#)

**SKU:**

**Categories:** Radiology Phantom



## Product Description

Innovative study tool for safe and effective CT Colon screening

**Features**

**Case / Pathology**

**Set includes**

**Packing size (approx.)**

**Materials**

**Production ? Development Supervision  
Update**

1. Cylindrical colon units with targets that represent polyps can be set at the position of ascending colon, descending colon and rectum in the life-size lower torso phantom. / 2. Four types of colon units are included for evaluation. Each unit has six targets lining in sequence on the inner wall of the unit. / 3. Contrast agent can be poured into the colon units for tagging.
polyps
1 lower torso phantom / 1 acrylic container / 4 types of colon units / 3 plugs for colon unit hole / 1 plug with ion chamber hole / 1 plug for ion chamber hole / 1 holder for colon unit / 1 base holder / 1 storage case / manual
W63 x D50 x H29cm / W24.8 x D19.7 x H11.4in
Soft tissue: urethane based resin (density: 1.06) / Synthetic bone: epoxy resin (density: 1.31)
National Cancer Center
July 20, 2020