



SEM

SEM TRAINERS & SYSTEMS

WHERE TIME MOVES AHEAD TO KEEP PACE WITH KNOWLEDGE

SEM- Scientific Educative Methods in Science, Engineering & Medicine

Mobile : +91 88495 63724

Mobile 1: +91 98791 03905

Email: sem@semtrainers.com

Website: www.semtrainers.com

CT Torso Phantom CTU-41

Item No. PH-4

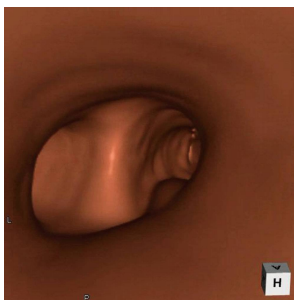
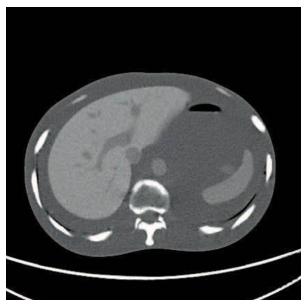
Weight 45kg

Brand KYOTO KAGAKU, JAPAN

[Read More](#)

SKU:

Categories: Radiology Phantom



Product Description

A one-piece anthropomorphic torso phantom with anatomical structures allows various CT approaches including helical scanning

Features

1. One-piece structure of the phantom facilitate study in volume CT scan including helical scan.
2. The phantom can be used for alignment in Image Guided Radiation Therapy (IGRT).

Training skills / Applications

Set includes

Size (approx.)

Packing size (approx.)

Weight (approx.)

Packing weight (approx.)

Materials

Update

CT
1 CT torso phantom / 1 set of sample X-ray data (DVD) / 1 storage case / manual
100cm / 39.4in
W118 x D63 x H47cm / W46.5 x D24.8 x H18.5in
45kg / 99lb
52kg / 114lb
Soft tissue: urethane based resin (density Synthetic bone: epoxy resin (density: 1.31)
July 20, 2020