



**SEM**

## SEM TRAINERS & SYSTEMS

WHERE TIME MOVES AHEAD TO KEEP PACE WITH KNOWLEDGE

SEM- Scientific Educative Methods in Science, Engineering & Medicine

**Mobile :** +91 88495 63724  
**Mobile 1:** +91 98791 03905

**Email:** sem@semtrainers.com  
**Website:** www.semtrainers.com



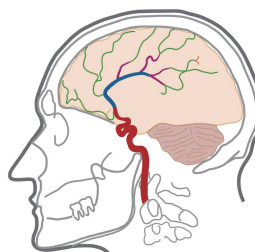
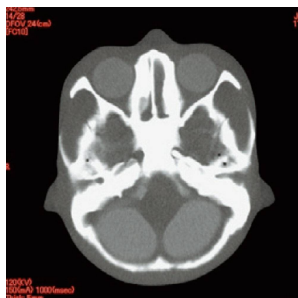
## Angiographic CT Head Phantom ACS

Item No. PH-3  
Weight 8 kg  
Brand KYOTO KAGAKU, JAPAN

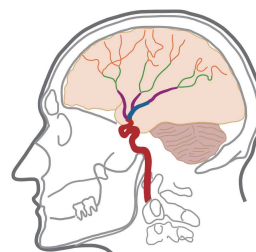
[Read More](#)

**SKU:**

**Categories:** Radiology Phantom



Anterior cerebral artery



Middle cerebral artery

## Product Description

Kyoto Kagaku's best-selling CT head phantom A new variation added: Head Phantom for MECT, which contains arteries of innovative water equivalent material

## Features

1. Three variations of head phantoms with different features for arteries to meet your requirements: CT/ Angiography / Multi energy CT / 2. Contrast-enhanced left cerebral arteries are three dimensionally embedded in the brain

## Training skills / Applications

### Set includes

### Size (approx.)

### Packing size (approx.)

### Weight (approx.)

### Packing weight (approx.)

### Materials

### Anatomy

### HU

### Update

CT/ Angiography / Multi energy CT
1 head phantom / 1 storage case / 1 set of sample X-ray data (DVD) / manual
H33cm / 13in
W46 x D31 x H32cm / W18.1 x D12.2 x H12.6in
5.25kg / 11.57lb
8kg / 17.6lb
Soft tissue: urethane based resin / Cervical vertebrae (C1-C7): epoxy resin
A synthetic skull / Soft tissue / Simulated arteries with contrast medium / Left anterior cerebral arteries / Left middle cerebral arteries / Internal carotid artery / Diameters of simulated 0.5-4.0 mm / *Arrangement of arteries are the same for all three types.
Soft tissue 0 / Cerebrum 40 / Mesencephalon 40 / Cerebellum 40 / Cerebral ventricles 10 / Eye balls 20
July 20, 2020