



**SEM**

## SEM TRAINERS & SYSTEMS

WHERE TIME MOVES AHEAD TO KEEP PACE WITH KNOWLEDGE

SEM- Scientific Educative Methods in Science, Engineering & Medicine

**Mobile :** +91 88495 63724

**Mobile 1:** +91 98791 03905

**Email:** sem@semtrainers.com

**Website:** www.semtrainers.com



## CT Abdomen Phantom

Item No. PH-5

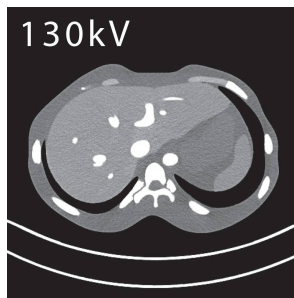
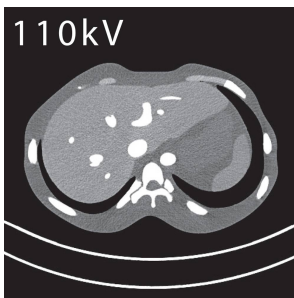
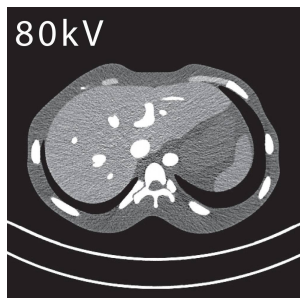
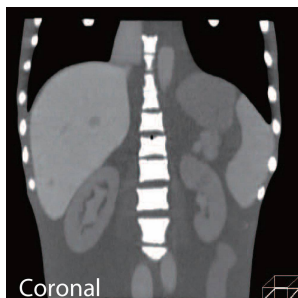
Weight 19 kg

Brand KYOTO KAGAKU, JAPAN

[Read More](#)

**SKU:**

**Categories:** Radiology Phantom



## Product Description

The phantom facilitates study of image fusion between CT and ultrasound in combination with US-1 Echozy\*. New variation for MECT has been added.

## Features

1. Two variation to meet your requirements: CT type (no contrast enhancement) MECT type (vessels with 13mgI/ml\*\* iodine and the liver of multi-energy CT compatible material). \*\*Concentration of iodine can be custom-ordered.

## Training skills / Applications

### Set includes

### Size (approx.)

### Packing size (approx.)

### Weight (approx.)

### Packing weight (approx.)

### Materials

### Anatomy

### Update

CT Multi energy CT
1 abdomen phantom / 1 set of sample X-ray data (DVD) / 1 storage case / manual
W27 x D16 x H30 cm W10.6 x D6.3 x H11.8 in
W44 x D39 x H42cm / W17.3 x D15.4 x H16.5in
12 kg / 26.4 lb
19kg / 42lb
Soft tissue: urethane based resin (density: 1.06) / Synthetic bone: epoxy resin (density: 1.31)
lungs (no internal structure) / heart (no internal structure) / liver / portal vein / gallbladder / hepatic vein / hepatic artery / kidneys / pancreas / spleen / aorta / IVC / spinal column / ribs / *Vessels and organs with a contrast agent can be included as a special order.
July 20, 2020