



**SEM**

## SEM TRAINERS & SYSTEMS

WHERE TIME MOVES AHEAD TO KEEP PACE WITH KNOWLEDGE

SEM- Scientific Educative Methods in Science, Engineering & Medicine

**Mobile :** +91 88495 63724

**Mobile 1:** +91 98791 03905

**Email:** sem@semtrainers.com

**Website:** www.semtrainers.com



## Lumbar Spine Fluoroscopy Training Phantom

Item No. PH-51

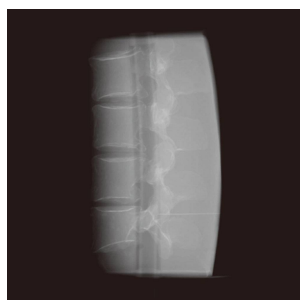
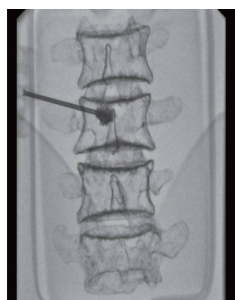
Weight 15kg

Brand KYOTO KAGAKU, JAPAN

[Read More](#)

**SKU:**

**Categories:**Uncategorized



### Product Description

Ideal training tool for hands-on workshop of vertebroplasty / The phantom has two types of interchangeable and replaceable inserts with radio-opaque lumbar spine

### Features

1. Two types of replaceable training block: vertebroplasty block and anesthesia block
2. Lumbar spine L2-L5 can be visualized under X-ray.
3. True-to-life sensation when penetrating tissue and bones.

**Set includes**

**Size (approx.)**

**Packing size (approx.)**

**Weight (approx.)**

**Materials**

**Replacement parts**

**Optional parts**

**Related products**

**Production ? Development Supervision**

**ANATOMY**

**Application**

**Doctor's Voice**

**Notes**

**Update**

1 lumbar torso 1 vertebroplasty block 1 anesthesia block 1 skin cover 1 syringe 1 irrigation bag 1 storage case manual
W33 x D21 x H30 cm / W13 x D8.2 x H11.8 in
W52 x D44 x H30 cm / W20.5 x D17.3 x H11.8 in
1.5kg / 3.3lb (Assessment unit)
Soft tissue: urethane based resin (specific gravity: 1.06) / Synthetic bone: epoxy resin (specific gravity: 1.31)
41913-000-01 anesthesia block for PH-51 / 41913-000-02 vertebroplasty block for PH-51 / 11348-150 Replacement skin cover for M43B
11348-090 1 LP block (normal CSF) 11348-110 1 LP block (obesity CSF) 11348-120 1 LP block (senior CSF) 11348-130 1 LP block (senior obesity CSF) 11348-140 1 epidural block 11348-150 1 lumbar region skin cover
<a href="#">M43B Lumbar Puncture Simulator II</a> <a href="#">MW3 Epidural Anesthesia Simulator</a> <a href="#">M43E Ultrasound Compatible Lumbar Puncture/ Epidural Simulator</a>
Dr. David Wilson MBBS, BSc, MFSEM, FRCP, FRCR, Consultant Radiologist St Luke's Hospital Oxford, Senior Clinical Lecturer University of Oxford
Lumbar spine (L2-L5) / Spinal canal / Epidural space (anesthesia block only)
Recognition of fluoroscopic anatomy and landmarks / Vertebroplasty / Fluoroscopy guided epidural anesthesia: needle placement in facet joint injection, root block and discogram.
"I have tested the final product with various different manufacturing kits and would have no hesitation in recommending these phantoms to clinicians who wish to teach any of the technical vertebroplasty procedures." / DR DAVID J WILSON MBBS BSc MFSEM FRCP FRCR / CONSULTANT MUSCULOSKELETAL INTERVENTIONAL RADIOLOGIST
Recommended devices: Epidural needle: 18G / Spinal needle: 21G
July 14, 2020