



SEM

SEM TRAINERS & SYSTEMS

WHERE TIME MOVES AHEAD TO KEEP PACE WITH KNOWLEDGE

SEM- Scientific Educative Methods in Science, Engineering & Medicine

Mobile : +91 88495 63724
Mobile 1: +91 98791 03905

Email: sem@semtrainers.com
Website: www.semtrainers.com

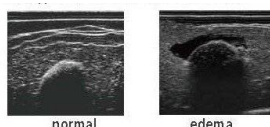
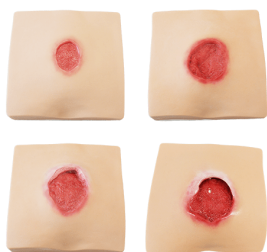
Pressure Sores Simulator

Item No. MW63
Weight 3.8 kg
Brand KYOTO KAGAKU, JAPAN

[Read More](#)

SKU:

Categories:Ultrasound Phantom



Product Description

MW63 Pressure Sores Simulator is a decubitus care skills trainer for the new era. Its detailed representation allows for a wide range of training scenarios, including sore assessment, ultrasound assessment of deep tissue injury, and necrotic tissue removal.

Features

Assessment of Pressure Sores (Compatible with DESIGN-R 2020) Assessment of deep tissue by ultrasound Prevention and treatment of pressure ulcers / Cleansing /Dressing Realistic reproduction of human tissue allows for accurate training environment

Training skills / Applications

assessment / palpation / ultrasound assessment of sciatic area / cleaning / dressing / application of topical medication/ NPWT/ debridement of necrotic tissue

Case / Pathology

sacral pressure sore (4 types) greater trochanter pressure sore sciatic pressure sore (3 types including deep tissue injury)

Set includes

Full set 1 lower body torso/ 4 types of sacral oressure sore pads (stage II, stage III, stage IV with granulation and stage IV with pockets) / 1 sciatic pressures sore pad/ 2 types of echo pads / 1 necrotic tissue removal set / 1 consumable set (simulated pus, blood, exudate and necrotic tissue) / 1 storage case / 1 instruction manualBasic set 1 lower body torso/ 4 types of sacral oressure sore pads (stage II, stage III, stage IV with granulation and stage IV with pockets) / 1 sciatic pressures sore pad / 1 consumable set (simulated pus, blood, exudate and necrotic tissue) / 1 storage case / 1 instruction manual

Size (approx.)

W44 x D40 x H38cm

Weight (approx.)

3.8kg□pad attached□

Replacement parts

11446-010 consumable set 11446-020 simulated pus (set of 2 packs) 11446-030 simulated exudate (set of 2 packs) 11446-040 simulated blood (set of 2 packs) 11446-050 simulated necrotic tissue (set of 2 packs) 11446-210 pad for necrotic tissue removal

Optional parts

11446-200 necrotic tissue removal set 11446-220 base for necrotic tissue removal 11446-070 echo pads set (normal/edema)

Related products

[Necrotic tissue removal set](#)

Production ? Development Supervision

MD. PhD, Professor Hiroto Terashi , Plastic and Reconstructive Surgery , Kobe University School of Medicine Masaharu Sugimoto, Former Professor, Kobe Gakuin University Madoka Noguchi, Nursing Department, Kobe University Hospital

Update

October 28, 2020