



**SEM**

## SEM TRAINERS & SYSTEMS

WHERE TIME MOVES AHEAD TO KEEP PACE WITH KNOWLEDGE

SEM- Scientific Educative Methods in Science, Engineering & Medicine

**Mobile :** +91 88495 63724  
**Mobile 1:** +91 98791 03905

**Email:** sem@semtrainers.com  
**Website:** www.semtrainers.com

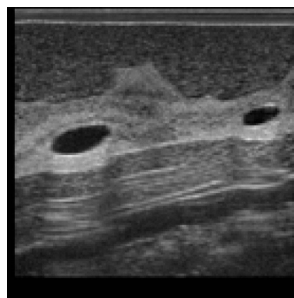
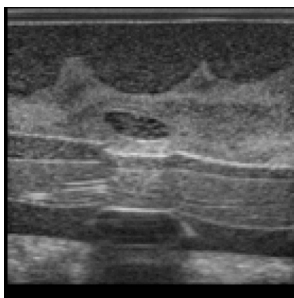
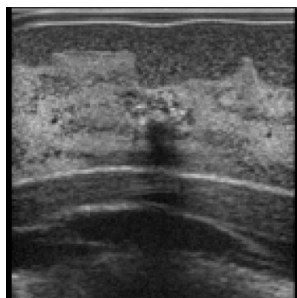
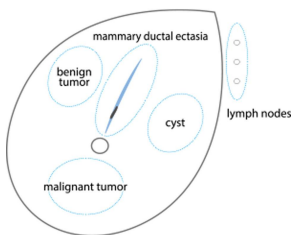
## Breast Ultrasound Examination Phantom "BREAST FAN"

Item No. US-6  
Weight 13 kg  
Brand KYOTO KAGAKU, JAPAN

[Read More](#)

**SKU:**

**Categories:**Ultrasound Phantom



## Product Description

Unique phantom for basic breast ultrasound examination

### Features

1. State-of-the-art breast ultrasound phantom with anatomy
2. Skills required for ultrasound breast screening can be greatly advanced with practice
3. Excellent ultrasound image quality.

Training skills / Applications

Set includes

Size (approx.)

Packing size (approx.)

Weight (approx.)

Packing weight (approx.)

Materials

Related products

Production ? Development Supervision

Notes

Update

Systematic full breast scanning Visualization of key anatomical landmarks Tracking of galactophore Visualization and differentiation of typical pathologies Localization and measurement of cysts and tumor
1 breast phantom /1 talcum powder/ 1 storage case / 1 tutorial manual (DVD) / 1 instruction manual
W26 x D38 x H11cm/W10.2 x D15.0 x H4.3 in
W57 x D43 x H27cm / W22.4 x D16.9 x H10.6in
7kg / 15.4lb
13kg / 28.7lbs
Polyurethane elastomer/ Latex free
<a href="#">US-4 Breast Ultrasound QA Phantom</a> <a href="#">US-9 Ultrasound-Guided Breast Biopsy Phantom</a> <a href="#">M44 Visual-Tactile Breast Examination Simulator</a>
Tokiko Endo, MD, PhD. Director of Department of Advanced Diagnosis, Clinical Research Center, National Hospital Organization Nagoya Medical Center. Director of Department of Radiology, National Hospital Organization Nagoya Medical Center
* Ultrasound scanner is not included.
August 20, 2020