



SEM

SEM TRAINERS & SYSTEMS

WHERE TIME MOVES AHEAD TO KEEP PACE WITH KNOWLEDGE

SEM- Scientific Educative Methods in Science, Engineering & Medicine

Mobile : +91 88495 63724
Mobile 1: +91 98791 03905

Email: sem@semtrainers.com
Website: www.semtrainers.com

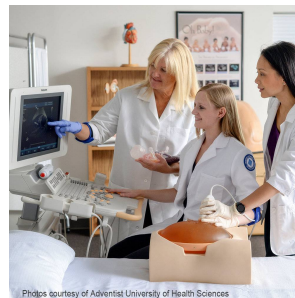
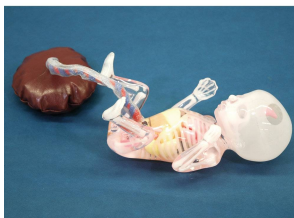
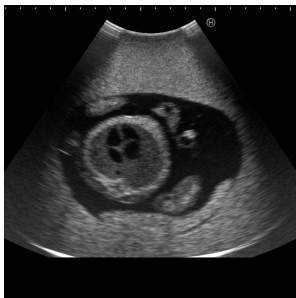
Fetus Ultrasound Examination Phantom "SPACE FAN-ST"

Item No. US-7?
Weight 17 kg
Brand KYOTO KAGAKU, JAPAN

[Read More](#)

SKU:

Categories:Ultrasound Phantom



Product Description

Staple phantom for hands-on practice in second trimester screening

Features

1. The oval shape phantom abdomen can be set into four different positions
2. The fetus includes full skeletal structures and key organs
3. Includes an educational DVD and a fetus demonstration model for comprehensive learning

Training skills / Applications

Set includes

Size (approx.)

Packing size (approx.)

Weight (approx.)

Packing weight (approx.)

Materials

Related products

Production ? Development Supervision

ANATOMY

Update

Fetal size assessment: BPD, AD, AC and FL / Measurement of amniotic fluid volume / Determination of fetus presentation (cephalic or breech) / Assessment of each body part -Head: skull and brain -Spine and limbs -Cardiac chambers, blood vessels and lungs / Assessment of umbilical cord and placenta position / Determination of sex (This phantom represents a male fetus)
1 mother body torso / 1 ultrasound pregnant uterus phantom / 1 fetus demonstration model / 1 storage case /1 talcum powder/ 1 tutorial manual (DVD)
W40 x D31 x H22cm (Maternal abdominal body) W30 x D21 x H15cm (Fetus examination part) W15.7 x D12.2 x H8.7in (Maternal abdominal body) W11.8 x D8.3 x H5.9in (Fetus examination part)
W72 x D44 x H39cm / W28.3 x D17.3 x H15.4in
7.3kg / 16.1lb
17kg / 37.5lbs
Soft resin/ Polyurethane elastomer/ Latex free
MW48 Full Perinatal Patient Care Simulator "Hana" MW34 Obstetric Examination Simulator
Kiyoko Kabeyama RN, RM, PhD. Professor Midwifery & Women's Health, School of Human Health. Science, Graduate School of Medicine, Kyoto University / Haruto Egawa, PhD. National Hospital Organization Kyoto Medical Center. Department of Obstetrics, Head Physician or Medical Director
UTERUS: amniotic fluid/ placenta / umbilical cord / FETUS: skeletal structure / brain with septum lucidum / lateral ventricles and cerebellum / heart with four chambers / lungs / spleen / bladder / stomach / liver / kidneys / aorta / umbilical vein / umbilical artery / external genitalia
June 30, 2020