



SEM

SEM TRAINERS & SYSTEMS

WHERE TIME MOVES AHEAD TO KEEP PACE WITH KNOWLEDGE

SEM- Scientific Educative Methods in Science, Engineering & Medicine

Mobile : +91 88495 63724
Mobile 1: +91 98791 03905

Email: sem@semtrainers.com
Website: www.semtrainers.com

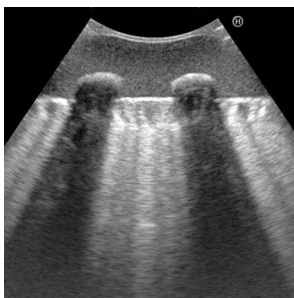
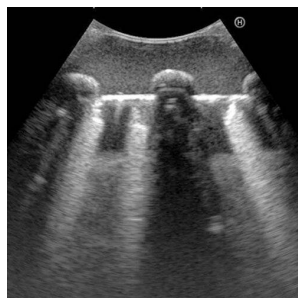
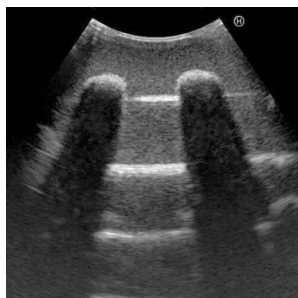
NEW! Lung Ultrasound Training Phantom ECHOLUNG

Item No. US-19
Weight
Brand KYOTO KAGAKU, JAPAN

[Read More](#)

SKU:

Categories:Ultrasound Phantom



Product Description

Because of the influx of patients from the COVID-19 pandemic, CT and X-ray machines are increasingly difficult to access for diagnostic purposes. As such, lung ultrasound is one solution to minimize exposure for medical professionals, and Kyoto Kagaku has developed a phantom to practice the basics of this procedure.

Features

Case / Pathology

Set includes

Size (approx.)

Packing size (approx.)

Weight (approx.)

Update

Four kinds of units: A-LINE, B-LINE(few), B-LINE(many), pneumonia and pleural effusion for training in the basics of lung ultrasound. Anatomy includes: lung, chest wall, ribs No special storage needed Suitable for training in large groups High durability Lung slide module and COVID-19 module under development
A-LINE B-LINE(few/many) Pneumonia and pleural effusion
Main Body Four kinds of lung modules Instruction manual Talcum powder Storage case
Body:32 x 25 x 12.5cm/13 x 10 x 4.9 inch Module:14.8 x 11.8 x 11cm/5.8 x 4.6 x 4.3 inch
Body:1.9kg/ A-LINE/B-LINE/B-LINE(many) : 0.9kg /Pneumonia and pleural effusion : 1.4kg
November 1, 2020