



**SEM**

## SEM TRAINERS & SYSTEMS

WHERE TIME MOVES AHEAD TO KEEP PACE WITH KNOWLEDGE

SEM- Scientific Educative Methods in Science, Engineering & Medicine

**Mobile :** +91 88495 63724  
**Mobile 1:** +91 98791 03905

**Email:** sem@semtrainers.com  
**Website:** www.semtrainers.com

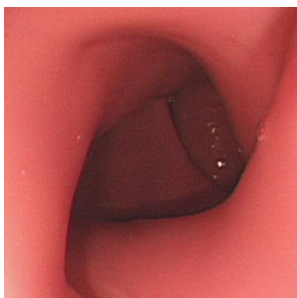
## Colonoscope Training Simulator

Item No. M40  
Weight 15 kg  
Brand KYOTO KAGAKU, JAPAN

[Read More](#)

**SKU:**

**Categories:**Surgery



### Product Description

Training for safe and effective colonoscopy

### Features

1. Offers a variety of difficulty levels. From simple, uncomplicated to complex cases 2. The colon tube can be made airtight, allowing for air insufflation and suction 3. The anal sphincter opening can be manipulated with a hand ball pump

## Training skills / Applications

## Set includes

## Size (approx.)

## Packing size (approx.)

## Weight (approx.)

## Packing weight (approx.)

## Materials

## Replacement parts

## Related products

## Recommended size of device

## CE certified/CE Certification?

## Update

Colonoscopy
1 abdomen model / 1 colon rectum tube / 1 anus unit / 1 air bulb / 1 abdomen skin cover / 1 set colon fixture / 5 colon layout guides (6 cases total) / 30 lubricants for colon-rectum tube (50ml each) / 30 endoscope lubricants (20ml each) / 1 plastic bottle / 1 stand / 1 rubber sheet / 1 anus plug / 1 training guide / 1 storage case / 1 instruction manual
W48 x D22 x H30" / W18.9 x D8.7 x H11.9in
W61 x D43 x H35cm / W24 x D17 x H14in
6.5kg/14.3lbs
15kg/33lb
Soft resin, hard resin / Latex free
11361-010 / 11361-020 / 11361-030 / 11361-120 / 11361-040 / 11361-050 / 11361-090 / 11361-100 / 11361-110
<a href="#">MW24 3D Colonoscope Training Simulator NKS</a>
9.2mm to 11.8mm (outer diameter)
No
October 10, 2020