



**SEM**

## SEM TRAINERS & SYSTEMS

WHERE TIME MOVES AHEAD TO KEEP PACE WITH KNOWLEDGE

SEM- Scientific Educative Methods in Science, Engineering & Medicine

**Mobile :** +91 88495 63724  
**Mobile 1:** +91 98791 03905

**Email:** sem@semtrainers.com  
**Website:** www.semtrainers.com



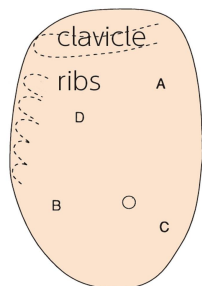
## Visual-Tactile Breast Examination Simulator

Item No. M44  
Weight 2 kg  
Brand KYOTO KAGAKU, JAPAN

[Read More](#)

**SKU:**

**Categories:**Gynecology



### Product Description

A compact and realistic breast examination trainer

### Features

### Training skills / Applications

1. Four breast lumps (tumor with dimple, tumor with skin depression, fibroadenoma and mastopathy)  
2. Bony landmarks for palpation: clavicle and ribs  
3. Soft and life-like texture

Tactile breast examination / Breast self-examination

## Case / Pathology

## Set includes

## Size (approx.)

## Packing size (approx.)

## Weight (approx.)

## Packing weight (approx.)

## Materials

## Related products

## Production ? Development Supervision Update

(A) Skin Dimpling (Tumor): Hard. Uneven surface. Partially unclear boundary / (B) Pitting (Tumor): Hard. Uneven surface. Partially unclear boundary. / (C) Fibroadenoma: Spherical. Smooth surface. Movable. Clear boundary. / (D) Mastopathy: Elastic. Smooth surface. Unclear boundary.

1 breast model (attached to the case) / 1 talcum powder / 1 storage case / 1 instruction manual

W20 x D28 x H13cm/W7.9 x D11.0 x H5.1in

W30 x D21 x H17cm / W11.8 x D8.3 x H6.7in

1.3kg / 2.9lb

2kg / 4.4lbs

Latex free/ Soft resin

[M71 Breast Self Examination Model -Body-worn type-](#)  
[US-6 Breast Ultrasound Examination Phantom "BREAST FAN"](#)  
[US-9 Ultrasound-Guided Breast Biopsy Phantom](#)

Tsuneaki Senoh, Prof., Kurashiki Medical Center

October 2, 2020