



## SEM TRAINERS & SYSTEMS

WHERE TIME MOVES AHEAD TO KEEP PACE WITH KNOWLEDGE

SEM- Scientific Educative Methods in Science, Engineering & Medicine

**Mobile :** +91 88495 63724  
**Mobile 1:** +91 98791 03905

**Email:** sem@semtrainers.com  
**Website:** www.semtrainers.com



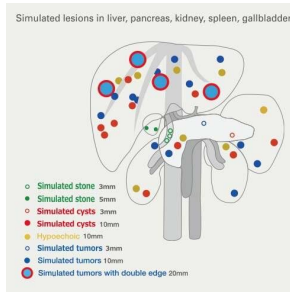
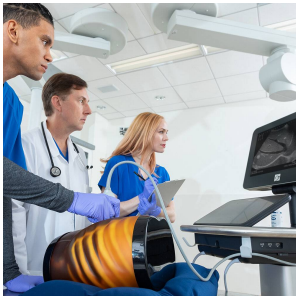
## Ultrasound Examination Training Phantom "ABDFAN"

**Item No.** US-1B  
**Weight** 20 kg  
**Brand** KYOTO KAGAKU, JAPAN

[Read More](#)

**SKU:**

**Categories:**Ultrasound Phantom



### Product Description

Abdominal ultrasound phantom with pathologies

### Features

1. Detailed hepatobiliary, pancreatic and other abdominal anatomy
2. Eight Couinaud's hepatic segments can be localized
3. ABDFAN has various simulated lesions to provide wider training variety

## Training skills / Applications

## Set includes

## Size (approx.)

## Packing size (approx.)

## Weight (approx.)

## Packing weight (approx.)

## Materials

## Related products

## Production ? Development Supervision

## Anatomy

## Pathologies

## Update

Basics of abdominal sonography:-Cross sections and sonographic anatomy Sonographic demonstration of each individual organ Localization of hepatic Couinaud's segments
41900-100 full set : 1 ultrasound phantom "ABDFAN" / 1 anatomical model "ECHO-ZOU" / 1 positioning pillow / 1 talcum powder/ 1 tutorial manual (DVD) /1 storage case / 1 instruction manual 41900-030 : 1 ultrasound phantom "ABDFAN" / 1 positioning pillow /1 talcum powder/ 1 tutorial manual (DVD) /1 storage case / 1 instruction manual
W29 x D19 x H31cm / W11.4 x D7 x H12.2in
41999-100: W72 x D44 x H39cm / W28 x D17 x H15in 41900-030: W44 x D39 x H42cm / W17.3 x D15.3 x 16.5in
12kg/26.5lbs
20kg / 44lbs
Polyurethane elastomer / Latex free
<a href="#">US-1 Ultrasound Examination Training Phantom "ECHOZY"</a> <a href="#">MW43"AbdoAbby" Abdominal Examination Simulator US-5</a> <a href="#">FAST/Acute Abdomen Phantom "FAST/ER FAN"</a>
Junji Machi, MD,PhD Unibersity of Hawaii at Manoa and Kuakini Medical Center
Liver (segmental anatomy, portal and hepatic venous systems, ligamentu, teres and ligamentum venosum) Biliary tract (gallbladder, cystic duct, intrahepatic and extrahepatic bile ducts) Spleen / kidneys Detailed vascular structures (aorta, vena cava, celiac artery and its branches, portal vein and its branches, superior mesenteric vessels, renal vessels, and more)
Hepatic lesions (cystic and solid) / Gallbladder and bile duct stones / Pancreatic tumors (one invading the portal vein) / Splenic lesions / Both kidney lesions / Left adrenal tumor
August 27, 2020