



## SEM TRAINERS & SYSTEMS

WHERE TIME MOVES AHEAD TO KEEP PACE WITH KNOWLEDGE

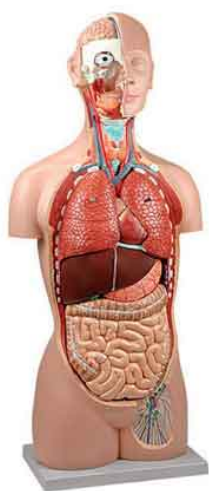
SEM- Scientific Educative Methods in Science, Engineering & Medicine

**Mobile :** +91 88495 63724

**Mobile 1:** +91 98791 03905

**Email:** sem@semtrainers.com

**Website:** www.semtrainers.com



## Classic Unisex Torso Model, 16 parts

Item No. MG31997

Weight 23.1 lbs

Make: Nasco Healthcare, USA

[Read More](#)

**SKU:**

**Categories:** Human Torso Models

## Product Description

Life-sized, it consists of 16 pieces and is suitable for any human anatomy course. All major systems and organs are represented with great attention to detail and precision. The head comes open, exposing half of the brain. The neck is dissected to expose muscular, neural, vascular, and glandular structures. The chest and abdomen are open providing a panoramic view of the internal organs and structures. Removable structures include: Half of the brain, divided along the longitudinal fissure axis, showing internal structures and blood vessels; Eye with optic nerve and extraocular muscles; Descending thoracic aorta and esophagus; Right and left lungs showing the bronchial tree and vascularization; Heart in two parts showing the atria, ventricles, heart valves and cut through the ventricular heart wall; Half of a kidney, sectioned along the frontal plane to show the internal structure and vessels; Kidney, urethra and bladder with prostate (removable in 2 parts); Stomach, showing muscular and vascular structures; Pancreas, stomach, duodenum and spleen with vessels and ducts; Liver; Small and large intestine with removable lid over portion of cecum. Mounted on durable polymer

base. Accompanying an interactive 3D anatomical model with augmented reality is a great tool to encourage learning and support. This platform allows students to engage in comparative analysis of anatomical models as they compare and contrast the structure of individual organs. This initiative also provides a platform for continuing education, providing opportunities for all students to increase their knowledge of anatomy, physiology and pathophysiology. One-Year Warranty Ship Weight (LBs): 23.1 lbs. Dimensions. (Inches): 36.22 x 17.32 x 11.81