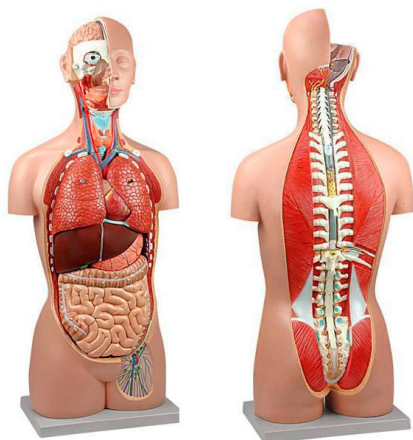


**SEM****SEM TRAINERS & SYSTEMS**

WHERE TIME MOVES AHEAD TO KEEP PACE WITH KNOWLEDGE

SEM- Scientific Educative Methods in Science, Engineering &amp; Medicine

**Mobile :** +91 88495 63724**Mobile 1:** +91 98791 03905**Email:** sem@semtrainers.com**Website:** www.semtrainers.com

## Classic Unisex Torso with Opened Neck & Back Model, 17 parts

Item No. MG31995

Weight 20.9 lbs

Make: Nasco Healthcare, USA

[Read More](#)**SKU:****Categories:**Human Torso Models

### Product Description

Life size consists of 17 parts accurate in every detail for use in human anatomy classes. The head is sectioned and exposes half of the brain. The neck is dissected through the ventral surface to show muscular, glandular, vascular, and neural structures. The chest and abdomen are open for unrestricted analysis of internal organs and associated structures. The back is dissected, revealing the muscular layers, vertebral column, spinal cord and nerve branches. A thoracic vertebra is removable for detailed examination of its structure and association with the spinal cord. Removable parts: Half of the brain, divided along the longitudinal axis to show internal structures and blood vessels; Eye with optic nerve and extraocular muscles; Right and left lungs showing the bronchial tree and vascularization; Descending thoracic aorta and esophagus; Heart in two parts showing the atria, ventricles, heart valves and cut through the ventricular heart wall; Half of a kidney, sectioned along the frontal plane to show the internal structure and vessels; Kidney, urethra and urinary bladder with prostate (removable in 2 parts); Stomach, showing muscular and vascular structures; Pancreas, stomach, duodenum and

spleen with vessels and ducts; Liver; Small and large intestine with removable lid over the cecum portion; 12th thoracic vertebra (T12) with spinal cord. Mounted on durable polymer base. Accompanying an interactive 3D anatomical model with augmented reality is a great tool to encourage learning and support. This platform allows students to engage in comparative analysis of anatomical models as they compare and contrast the structure of individual organs. This initiative also provides a platform for continuing education, providing opportunities for all students to increase their knowledge of anatomy, physiology and pathophysiology. One-Year Warranty Ship Weight (LBs): 20.9 lbs. Dimensions. (Inches): 36.22 x 17.32 x 11.81