



SEM TRAINERS & SYSTEMS

WHERE TIME MOVES AHEAD TO KEEP PACE WITH KNOWLEDGE

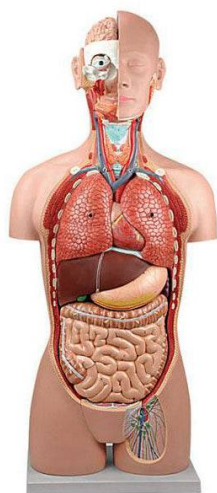
SEM- Scientific Educative Methods in Science, Engineering & Medicine

Mobile : +91 88495 63724

Mobile 1: +91 98791 03905

Email: sem@semtrainers.com

Website: www.semtrainers.com



Classic Unisex Torso with Opened Neck & Back Model, 18 parts

Item No. MG31998

Weight 22 lbs

Make: Nasco Healthcare, USA

[Read More](#)

SKU:

Categories: Human Torso Models

Product Description

Life size consists of 18 pieces, providing a realistic and detailed reproduction of internal organs. The head is sectioned to expose one half of the brain. The neck is dissected through the ventral surface to show muscular, glandular, vascular, and neural structures. The chest and abdomen are completely open for a perfect, unrestricted view of the internal organs and associated structures. Anatomical structures of the body's main systems are numbered and identified in an information leaflet that accompanies the product; The removable components are as follows: Half of the brain, divided along the longitudinal axis to expose fissures, internal structures and blood vessels; The eye with optic nerve and extraocular muscles; The trachea; The descending thoracic aorta and esophagus; The right and left lungs (2 pieces each), showing the bronchial tree and vasculature; The liver with gallbladder; Half of a kidney, sectioned along the frontal plane to show the internal structure and vessels; The heart in two parts showing the atria, ventricles, heart valves and cut through the ventricular heart wall; The stomach; The pancreas, stomach, duodenum and spleen with vessels and ducts; The small intestine

and large intestine with a removable window in the cecal region; The removable cover in the crotch area. Accompanying an interactive 3D anatomical model with augmented reality is a great tool to encourage learning and support. This platform allows students to engage in comparative analysis of anatomical models as they compare and contrast the structure of individual organs. This initiative also provides a platform for continuing education, providing opportunities for all students to increase their knowledge of anatomy, physiology and pathophysiology. One-Year Warranty Ship Weight (LBs): 22 lbs. Dimensions. (Inches): 36.22 x 17.32 x 11.81