



SEM

SEM TRAINERS & SYSTEMS

WHERE TIME MOVES AHEAD TO KEEP PACE WITH KNOWLEDGE

SEM- Scientific Educative Methods in Science, Engineering & Medicine

Mobile : +91 88495 63724
Mobile 1: +91 98791 03905

Email: sem@semtrainers.com
Website: www.semtrainers.com

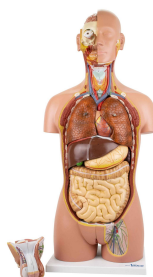
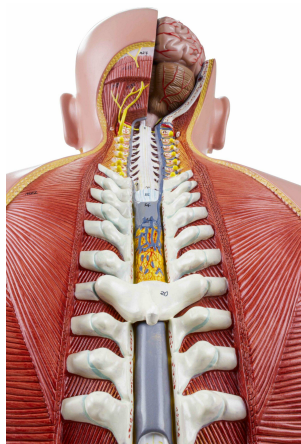
Deluxe Dual-Sex Torso with Open Neck & Back Model, 27 Parts

Item No. MG32003
Weight 24.3 lbs
Make: Nasco Healthcare, USA

[Read More](#)

SKU:

Categories: Human Torso Models



Product Description

Full life size with open back, composed of 27 parts, provides realistic reproduction and detailed

anatomical structures. All body systems are represented with full accessibility. Significant structures are numbered and referenced in an explanatory leaflet. This model is a valuable addition to any biology or anatomy course. The open back exposes muscle layers as well as the spinal column and associated nerve branches. A thoracic vertebra, including a section of spinal cord, is removable for analysis of its anatomical details. The head comes open and the brain is completely exposed on one side, the neck is dissected to expose the musculature, neural, vascular and glandular structures. Significant features are numbered and referenced in an explanatory leaflet. The detachable male and female urogenital systems are interchangeable. Removable structures include: Eye with optic nerve and extraocular muscles; Half of the brain, divided along the longitudinal axis showing internal structures and blood vessels; Trachea; Descending thoracic aorta and esophagus; Right and left lungs (2 pieces each), showing the bronchial tree and vascularization; Liver with gallbladder; Half of a kidney in section along the frontal plane, showing the internal structure and vessels; Heart in 2 parts with clear description of the atria, ventricles, valves and the heart wall section; Stomach dissected into 2 parts; Pancreas, stomach, duodenum and spleen with vessels and ducts; Small and large intestines with removable lid over the cecum portion; Male and female urogenital (4 parts each), sectioned to provide excellent views of internal elements; Thoracic vertebrae (T12) with spinal cord. Accompanying an interactive 3D anatomical model with augmented reality is a great tool to encourage learning and support. This platform allows students to engage in comparative analysis of anatomical models as they compare and contrast the structure of individual organs. This initiative also provides a platform for continuing education, providing opportunities for all students to increase their knowledge of anatomy, physiology and pathophysiology. One-Year Warranty Ship Weight (LBs): 24.3 lbs. Dimensions. (Inches): 36.22 x 17.32 x 11.81