



SEM

SEM TRAINERS & SYSTEMS

WHERE TIME MOVES AHEAD TO KEEP PACE WITH KNOWLEDGE

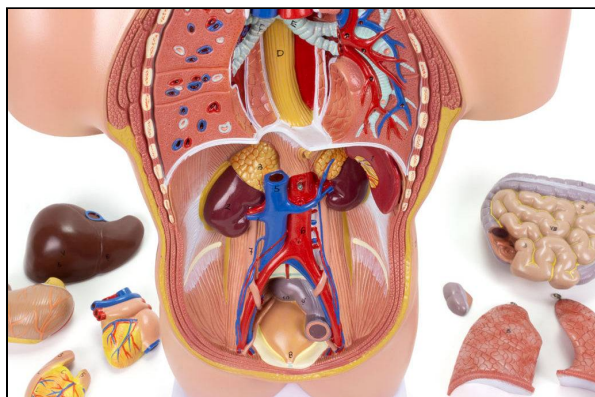
SEM- Scientific Educative Methods in Science, Engineering & Medicine

Mobile : +91 88495 63724

Mobile 1: +91 98791 03905

Email: sem@semtrainers.com

Website: www.semtrainers.com



Mini Unisex Torso Model, 12 Parts

Item No. MG29696

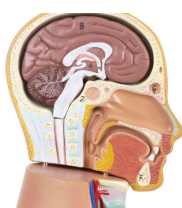
Weight 6 lbs

Make: Nasco Healthcare, USA

[Read More](#)

SKU:

Categories: Human Torso Models



Product Description

A half-life-size torso with a removable head that opens to reveal internal structures, including a detailed removable half-brain. The front portions of both lungs are removable, exposing pulmonary vasculature and airways (right lung) and general appearance of the internal tissue (left lung). It is an excellent tool in basic anatomy education, consisting of 12 parts: Shows a section of the brain and upper respiratory tract; Half of the brain, showing internal structures; 2 lungs; Cardiac (2 parts) showing the atria, ventricles and valves; Liver with gallbladder; Stomach; Single piece including small intestine, large intestine and pancreas; Removable lid that exposes the interior of the cecum and ileum; Accompanying an interactive 3D anatomical model with augmented reality is a great tool to encourage learning and support. This platform allows students to engage in comparative analysis of anatomical models as they compare and contrast the structure of individual organs. This initiative also provides a platform for continuing education, providing opportunities for all students to increase their knowledge of anatomy,

physiology and pathophysiology. One-Year Warranty Ship Weight (LBs): 6 lbs. Dimensions. (Inches):
8.27 x 6.3 x 19.69