



SEM

SEM TRAINERS & SYSTEMS

WHERE TIME MOVES AHEAD TO KEEP PACE WITH KNOWLEDGE

SEM- Scientific Educative Methods in Science, Engineering & Medicine

Mobile : +91 88495 63724

Mobile 1: +91 98791 03905

Email: sem@semtrainers.com

Website: www.semtrainers.com

Torso Section Model, 24 Discs

Item No. MG32002

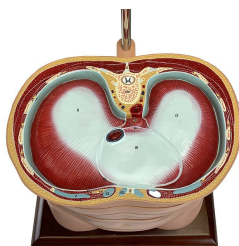
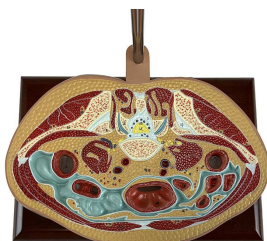
Weight 27.6 lbs

Make: Nasco Healthcare, USA

[Read More](#)

SKU:

Categories: Human Torso Models



Product Description

Life-size torso model, cut horizontally into 24 pieces, showing how a CT and MRI scan works. Each part can be rotated and removed for closer and more accurate examination. All structures, including muscles, nerves, are numbered and identified on an information card. Accompanying an interactive 3D anatomical model with augmented reality is a great tool to encourage learning and support. This platform allows students to engage in comparative analysis of anatomical models as they compare and

contrast the structure of individual organs. This initiative also provides a platform for continuing education, providing opportunities for all students to increase their knowledge of anatomy, physiology and pathophysiology. One-Year Warranty Ship Weight (LBs): 27.6 lbs. Dimensions. (Inches): 35.83 x 20.47 x 16.54