



SEM

SEM TRAINERS & SYSTEMS

WHERE TIME MOVES AHEAD TO KEEP PACE WITH KNOWLEDGE

SEM- Scientific Educative Methods in Science, Engineering & Medicine

Mobile : +91 88495 63724

Mobile 1: +91 98791 03905

Email: sem@semtrainers.com

Website: www.semtrainers.com



Abdomen Axial Section Model

Item No. MG31112

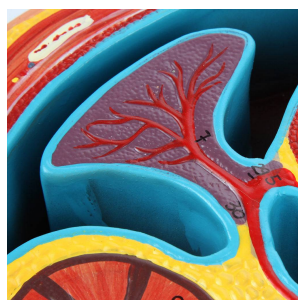
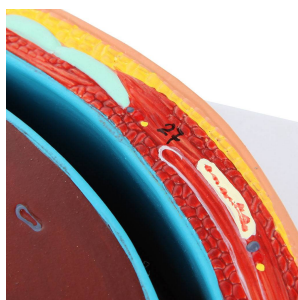
Weight 4.4 lbs

Make: Nasco Healthcare, USA

[Read More](#)

SKU:

Categories: Digestive System Models



Product Description

Life-size model showing a typical axial (cross-sectional) view through the abdomen at the level of the stomach and T12 vertebra. The liver, kidney, spleen and other abdominal structures are divided horizontally. Mounted on durable polymer base. Accompanying an interactive 3D anatomical model with augmented reality is a great tool to encourage learning and support. This platform allows students to engage in comparative analysis of anatomical models as they compare and contrast the structure of

individual organs. This initiative also provides a platform for continuing education, providing opportunities for all students to increase their knowledge of anatomy, physiology and pathophysiology. One-Year Warranty Ship Weight (LBs): 4.4 lbs. Dimensions. (Inches): 17.32 x 12.99 x 8.66