



SEM TRAINERS & SYSTEMS

WHERE TIME MOVES AHEAD TO KEEP PACE WITH KNOWLEDGE

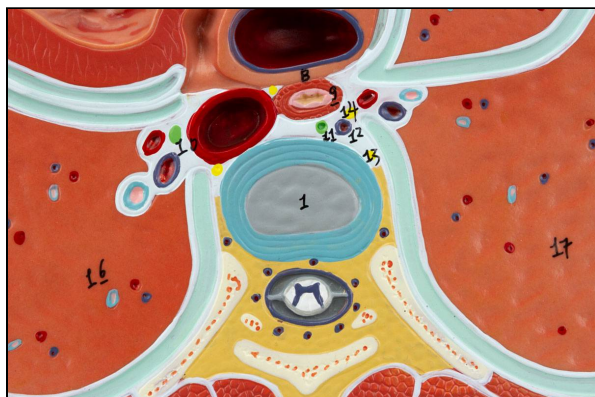
SEM- Scientific Educative Methods in Science, Engineering & Medicine

Mobile : +91 88495 63724

Mobile 1: +91 98791 03905

Email: sem@semtrainers.com

Website: www.semtrainers.com



Thorax Axial Section Model

Item No. MG31113

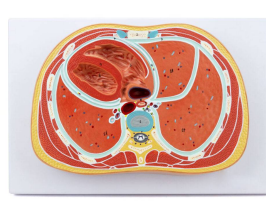
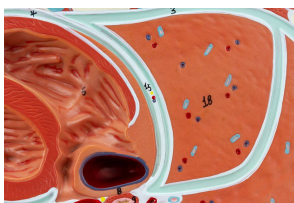
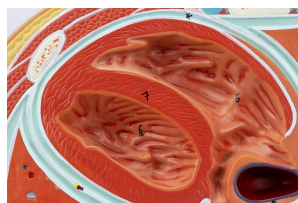
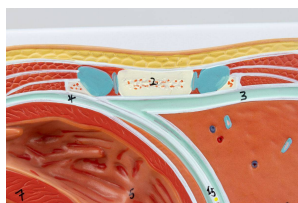
Weight 3.3 lbs

Make: Nasco Healthcare, USA

[Read More](#)

SKU:

Categories: Ear, Nose and Throat (ENT)



Product Description

Life-size model that shows an axial (cross-sectional) view through the thorax at the level of the T6 vertebra, making it possible to observe the heart, lungs, veins, arteries and other thoracic structures in a horizontal section. Accompanying an interactive 3D anatomical model with augmented reality is a great tool to encourage learning and support. This platform allows students to engage in comparative analysis of anatomical models as they compare and contrast the structure of individual organs. This initiative also provides a platform for continuing education, providing opportunities for all students to increase their knowledge of anatomy, physiology and pathophysiology. One-Year Warranty Ship Weight (LBs): 3.3 lbs. Dimensions. (Inches): 17.32 x 12.99 x 8.66