



## SEM TRAINERS & SYSTEMS

WHERE TIME MOVES AHEAD TO KEEP PACE WITH KNOWLEDGE

SEM- Scientific Educative Methods in Science, Engineering & Medicine

**Mobile :** +91 88495 63724  
**Mobile 1:** +91 98791 03905

**Email:** sem@semtrainers.com  
**Website:** www.semtrainers.com

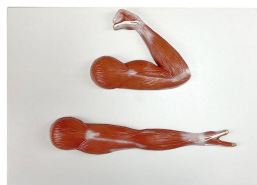
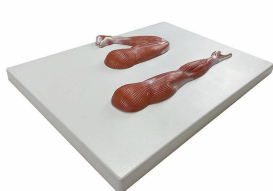
## Arm Muscles Model, Half-Size

**Item No.** MG29870  
**Weight** 3.3 lbs  
**Make:** Nasco Healthcare, USA

[Read More](#)

**SKU:**

**Categories:** Muscle Models



## Product Description

A half life-size model that shows the arm muscles in relaxed and contracted states. Muscles and tendons are shown in detail and structures are numbered. Accompanying an interactive 3D anatomical model with augmented reality is a great tool to encourage learning and support. This platform allows students to engage in comparative analysis of anatomical models as they compare and contrast the structure of individual organs. This initiative also provides a platform for continuing education, providing

opportunities for all students to increase their knowledge of anatomy, physiology and pathophysiology.  
One-Year Warranty Ship Weight (LBs): 3.3 lbs. Dimensions. (Inches): 23.62 x 18.11 x 6.3