



SEM

SEM TRAINERS & SYSTEMS

WHERE TIME MOVES AHEAD TO KEEP PACE WITH KNOWLEDGE

SEM- Scientific Educative Methods in Science, Engineering & Medicine

Mobile : +91 88495 63724
Mobile 1: +91 98791 03905

Email: sem@semtrainers.com
Website: www.semtrainers.com



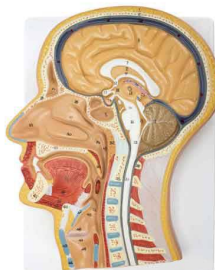
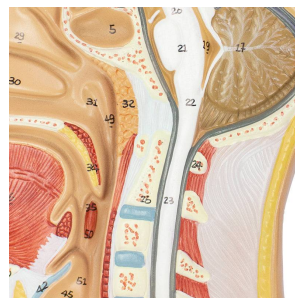
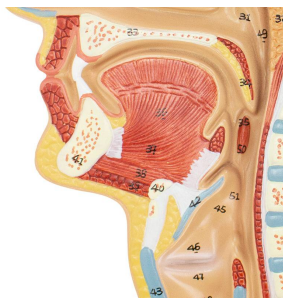
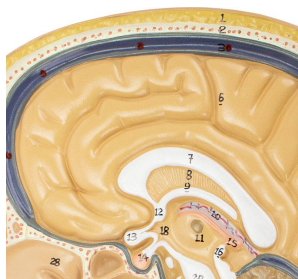
Head Lateral Section Model

Item No. MG31109
Weight 3.3 lbs
Make: Nasco Healthcare, USA

[Read More](#)

SKU:

Categories:Head Models



Product Description

Representation of the Lateral Section of the Head in full size shows the internal structures of the head and neck. This relief model shows all relevant structures of the oronasal and oral cavities, cervical spine and brain of the human head. Accompanying an interactive 3D anatomical model with augmented reality is a great tool to encourage learning and support. This platform allows students to engage in comparative analysis of anatomical models as they compare and contrast the structure of individual organs. This initiative also provides a platform for continuing education, providing opportunities for all students to increase their knowledge of anatomy, physiology and pathophysiology. One-Year Warranty Ship Weight (LBs): 3.3 lbs. Dimensions. (Inches): 16.14 x 10.63 x 8.66