



SEM

SEM TRAINERS & SYSTEMS

WHERE TIME MOVES AHEAD TO KEEP PACE WITH KNOWLEDGE

SEM- Scientific Educative Methods in Science, Engineering & Medicine

Mobile : +91 88495 63724
Mobile 1: +91 98791 03905

Email: sem@semtrainers.com
Website: www.semtrainers.com



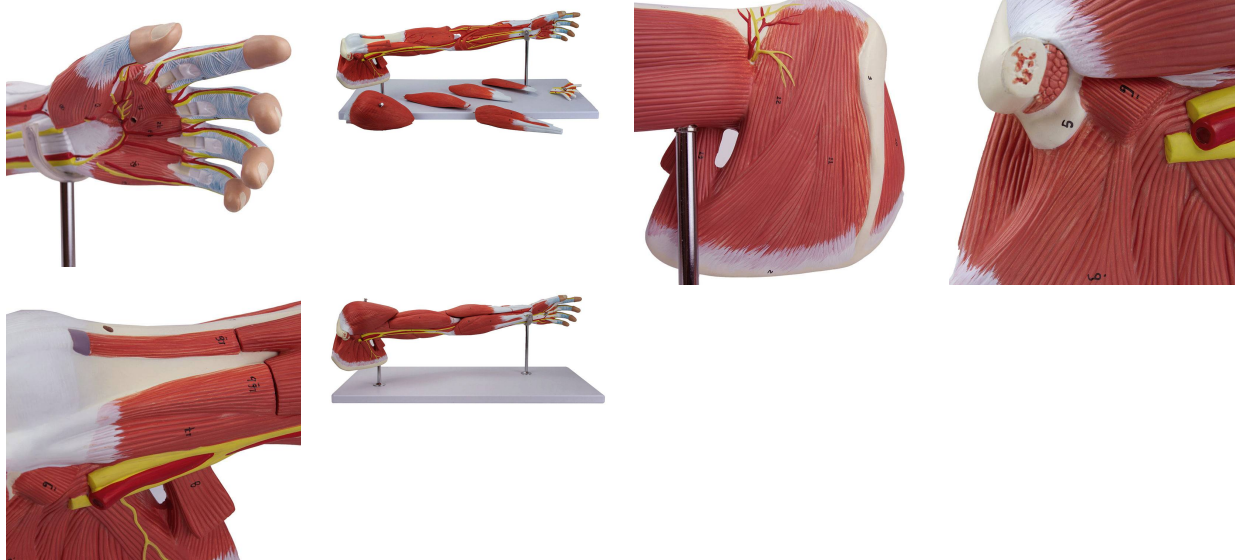
Deluxe Muscles of the Arm Model, 7-Parts

Item No. MG21152
Weight 6.6 lbs
Make: Nasco Healthcare, USA

[Read More](#)

SKU:

Categories:Muscle Models



Product Description

A life-size model that shows in detail the complete anatomical structure of the arm with superficial and deep muscles vascular structures nerves ligaments hand and shoulder. Parts are removable: Deltoid muscle Biceps Triceps Palmar longus muscle with wrist flexor radialis muscle Brachioradialis muscle Wrist radial extensor muscle Palmar aponeurosis muscle. Accompanying an interactive 3D anatomical model with augmented reality is a great tool to encourage learning and support. This platform allows students to engage in comparative analysis of anatomical models as they compare and contrast the structure of individual organs. This initiative also provides a platform for continuing education providing opportunities for all students to increase their knowledge of anatomy physiology and pathophysiology. One-Year Warranty Ship Weight (LBs): 6.6 lbs. Dimensions. (Inches): 28.35 x 12.6 x 13.78