



**SEM**

## SEM TRAINERS & SYSTEMS

WHERE TIME MOVES AHEAD TO KEEP PACE WITH KNOWLEDGE

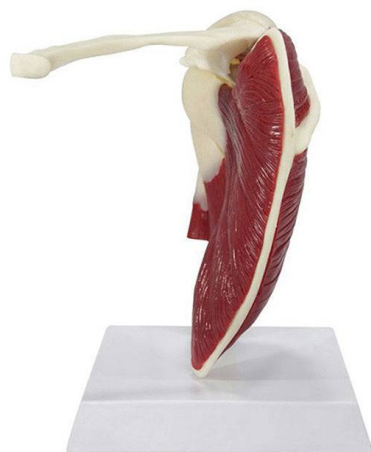
SEM- Scientific Educative Methods in Science, Engineering & Medicine

**Mobile :** +91 88495 63724

**Mobile 1:** +91 98791 03905

**Email:** sem@semtrainers.com

**Website:** www.semtrainers.com



## Shoulder with Articulating Rotator Cuff Model

Item No. MG29750

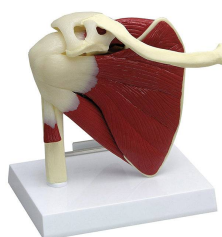
Weight 3.3 lbs

Make: Nasco Healthcare, USA

[Read More](#)

**SKU:**

**Categories:**Joint Models



### Product Description

Right shoulder joint model is a realistic life-size replica. Featuring a right semi-articulated rotator cuff with an encapsulated humerus that can be removed from the capsular ligament. This allows demonstration of the role of the rotator cuff in fixing the humerus in the glenoid cavity and pressing on it during elevation. It is ideal for demonstrating the anatomy of the rotator cuff joint and muscles to patients and students. Made of high quality durable plastic material, includes double-sided key card to

display the front and back marked parts; The model presented on a display stand and can be removed from the base is ideal for clinics in orthopedic environments where demonstrations help improve patient understanding and education. This full-size shoulder model includes: subscapularis, supraspinatus, and teres major and minor muscles; acromion, clavicle, humerus and scapula bones; The model includes the infraspinatus, teres minor, teres major, subscapularis and supraspinatus ligaments and muscles; Acromion, clavicle, humerus and scapula bones; Plus 8 ligaments and tendons. Accompanying an interactive 3D anatomical model with augmented reality is a great tool to encourage learning and support. This platform allows students to engage in comparative analysis of anatomical models as they compare and contrast the structure of individual organs. This initiative also provides a platform for continuing education, providing opportunities for all students to increase their knowledge of anatomy, physiology and pathophysiology. One-Year Warranty Ship Weight (LBs): 3.3 lbs. Dimensions. (Inches): 8.27 x 6.3 x 11.81