



SEM TRAINERS & SYSTEMS

WHERE TIME MOVES AHEAD TO KEEP PACE WITH KNOWLEDGE

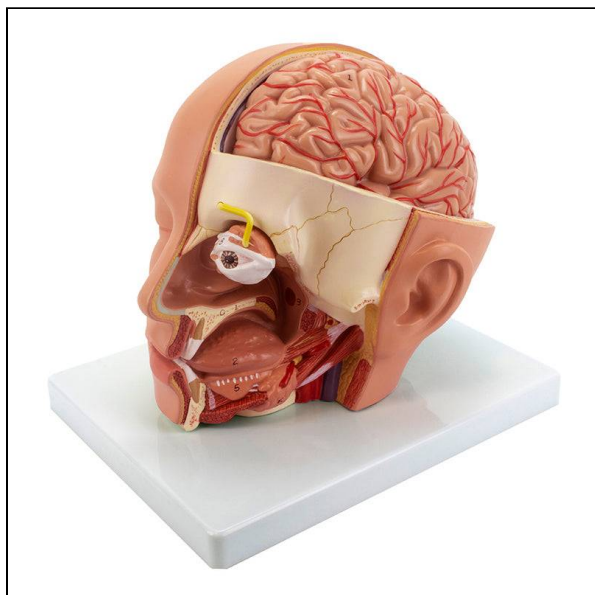
SEM- Scientific Educative Methods in Science, Engineering & Medicine

Mobile : +91 88495 63724

Mobile 1: +91 98791 03905

Email: sem@semtrainers.com

Website: www.semtrainers.com



Deluxe Head Model, 4-Parts

Item No. MG21266

Weight 4.4 lbs

Make: Nasco Healthcare, USA

[Read More](#)

SKU:

Categories:Head Models

Product Description

A life-size model made up of 4 parts: Half of the brain has the internal structure of the brain including blood vessels; Half of the cerebellum; Eyes with optic nerve; The right side of the face is dissected in sagittal and horizontal section showing many significant internal features of the skull and brain as well as the entire oro-nasal cavity; Accompanying an interactive 3D anatomical model with augmented reality is a great tool to encourage learning and support. This platform allows students to engage in comparative analysis of anatomical models as they compare and contrast the structure of individual organs. This initiative also provides a platform for continuing education providing opportunities for all students to increase their knowledge of anatomy physiology and pathophysiology. One-Year Warranty Ship Weight (LBs): 4.4 lbs. Dimensions. (Inches): 8.27 x 6.3 x 11.81