



**SEM**

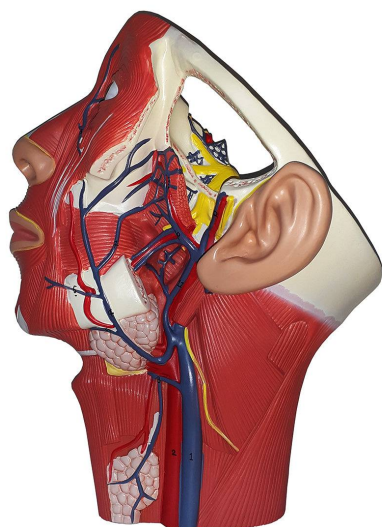
## SEM TRAINERS & SYSTEMS

WHERE TIME MOVES AHEAD TO KEEP PACE WITH KNOWLEDGE

SEM- Scientific Educative Methods in Science, Engineering & Medicine

**Mobile :** +91 88495 63724  
**Mobile 1:** +91 98791 03905

**Email:** sem@semtrainers.com  
**Website:** www.semtrainers.com



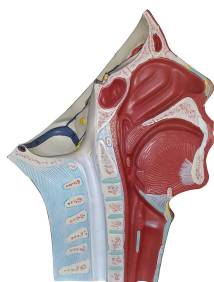
## Head Musculature with Blood Vessels Model

Item No. MG29869  
Weight 2.2 lbs  
Make: Nasco Healthcare, USA

[Read More](#)

**SKU:**

**Categories:**Head Models



### Product Description

Model showing the path of the left internal jugular vein in the cervical region and head, including the terminal venous branches. Accompanying an interactive 3D anatomical model with augmented reality is a great tool to encourage learning and support. This platform allows students to engage in comparative analysis of anatomical models as they compare and contrast the structure of individual organs. This initiative also provides a platform for continuing education, providing opportunities for all

students to increase their knowledge of anatomy, physiology and pathophysiology. One-Year Warranty  
Ship Weight (LBs): 2.2 lbs. Dimensions. (Inches): 8.27 x 6.3 x 11.81