



SEM

SEM TRAINERS & SYSTEMS

WHERE TIME MOVES AHEAD TO KEEP PACE WITH KNOWLEDGE

SEM- Scientific Educative Methods in Science, Engineering & Medicine

Mobile : +91 88495 63724
Mobile 1: +91 98791 03905

Email: sem@semtrainers.com
Website: www.semtrainers.com

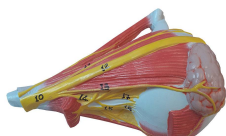
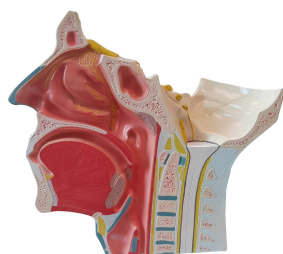
Head Musculature with Cranial & Autonomic Nerves Model, 2 1/2X Enlarged

Item No. MG29868
Weight 5.5 lbs
Make: Nasco Healthcare, USA

[Read More](#)

SKU:

Categories:Head Models



Product Description

Model showing the dissection of half a human head 2 1/2 times life size. Shows the 12 cranial nerves with collateral branches and autonomic nerves. The median section reveals the upper respiratory tract and pharynx. The eyeball is removable for closer examination. Important anatomical structures are numbered and indicated in different colors for easy understanding. Made with long-lasting synthetic material. Mounted on durable polymer base with stand One-Year Warranty Ship Weight (LBs): 5.5 lbs.

Dimensions. (Inches): 17.32 x 12.99 x 18.11