



**SEM**

## SEM TRAINERS & SYSTEMS

WHERE TIME MOVES AHEAD TO KEEP PACE WITH KNOWLEDGE

SEM- Scientific Educative Methods in Science, Engineering & Medicine

**Mobile :** +91 88495 63724  
**Mobile 1:** +91 98791 03905

**Email:** sem@semtrainers.com  
**Website:** www.semtrainers.com



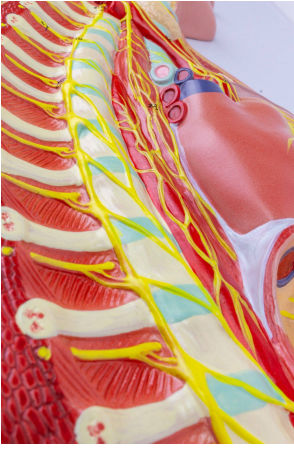
## Sympathetic Nervous System Model

Item No. MG31332  
Weight 2.2 lbs  
Make: Nasco Healthcare, USA

[Read More](#)

**SKU:**

**Categories:**Nervous System Models



## Product Description

Model measuring 2/3rds of life size mounted on a board in high relief, shows the nervous branches of the thorax, abdomen and pelvis, demonstrates the sympathetic nervous system, responsible for stimulating actions that respond to stressful situations in general, such as accelerated heartbeat, increased blood pressure, increased adrenaline, increased blood sugar concentration and activation of the body's general metabolism, acting automatically, independently of our will. Anatomically, it is formed by two groups of pre- and post-ganglionic neurons. Its preganglionic neurons are located in the spinal cord, more precisely at levels from T1 to L2. The model shows the nerve branches of the thorax, abdomen and pelvis. Includes the sympathetic and parasympathetic nervous systems. Accompanying an interactive 3D anatomical model with augmented reality is a great tool to encourage learning and support. This platform allows students to engage in comparative analysis of anatomical models as they compare and contrast the structure of individual organs. This initiative also provides a platform for continuing education, providing opportunities for all students to increase their knowledge of anatomy, physiology and pathophysiology. One-Year Warranty Ship Weight (LBs): 2.2 lbs. Dimensions. (Inches): 28.35 x 19.69 x 8.66