



SEM TRAINERS & SYSTEMS

WHERE TIME MOVES AHEAD TO KEEP PACE WITH KNOWLEDGE

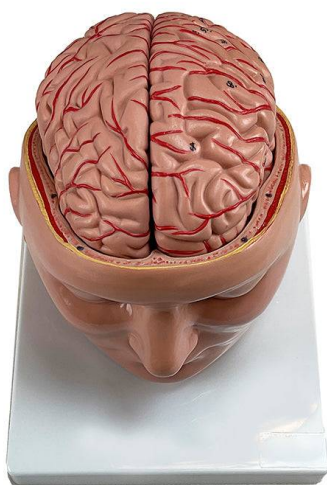
SEM- Scientific Educative Methods in Science, Engineering & Medicine

Mobile : +91 88495 63724

Mobile 1: +91 98791 03905

Email: sem@semtrainers.com

Website: www.semtrainers.com



Brain with Arteries Model, 9 Parts

Item No. MG36150

Weight 5.5 lbs

Make: Nasco Healthcare, USA

[Read More](#)

SKU:

Categories:Brain Models

Product Description

This life-size anatomical model features a detailed replica of the lower portion of the human head along with an intricately designed, removable brain. The head serves as a sturdy base for the brain while accurately displaying the cranial nerves and the basilar artery, providing an in-depth look at essential neurological structures. The brain is dissectible into 9 parts, including the frontal and parietal lobes, temporal and occipital lobes, a two-part medulla, and a two-part cerebellum. Accompanying an interactive 3D anatomical model with augmented reality is a great tool to encourage learning and support. This platform allows students to engage in comparative analysis of anatomical models as they compare and contrast the structure of individual organs. This initiative also provides a platform for continuing education, providing opportunities for all students to increase their knowledge of anatomy, physiology and pathophysiology. One-Year Warranty Ship Weight (LBs): 5.5 lbs. Dimensions. (Inches): 8.27 x 6.3 x 11.81