



SEM

SEM TRAINERS & SYSTEMS

WHERE TIME MOVES AHEAD TO KEEP PACE WITH KNOWLEDGE

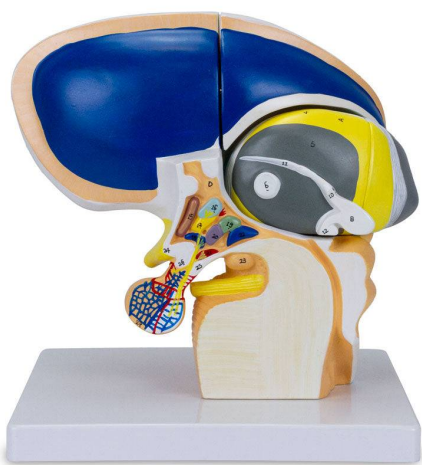
SEM- Scientific Educative Methods in Science, Engineering & Medicine

Mobile : +91 88495 63724

Mobile 1: +91 98791 03905

Email: sem@semtrainers.com

Website: www.semtrainers.com



Brain Model, 5X Enlarged, 4 Parts

Item No. MG22801

Weight 4.4 lbs

Make: Nasco Healthcare, USA

[Read More](#)

SKU:

Categories:Brain Models

Product Description

A 4-part model, magnified five times life size, showing the human diencephalon: all the main parts of the thalamus, epithalamus, metathalamus and hypothalamus are represented in detail. The hypothalamic nuclei are shown in different colors; The thalamus is removable and divisible into two parts to show the interior of the anatomy. Important anatomical structures are numbered and indicated in different colors for easy understanding. One-Year Warranty Ship Weight (LBs): 4.4 lbs. Dimensions. (Inches): 10.24 x 7.87 x 9.84