



SEM

SEM TRAINERS & SYSTEMS

WHERE TIME MOVES AHEAD TO KEEP PACE WITH KNOWLEDGE

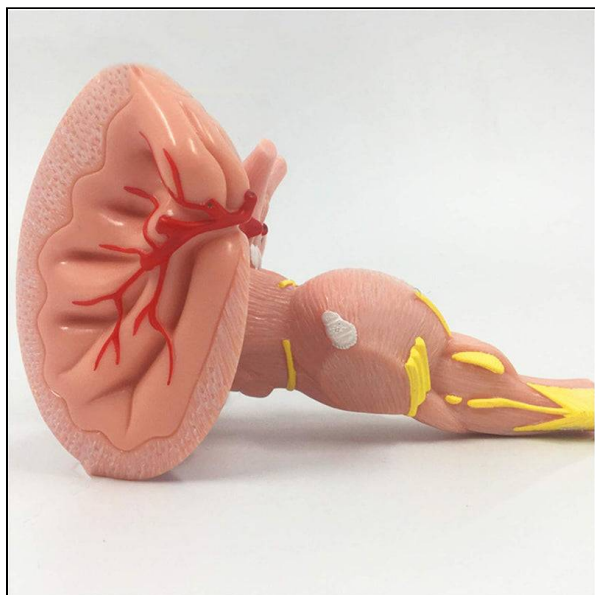
SEM- Scientific Educative Methods in Science, Engineering & Medicine

Mobile : +91 88495 63724

Mobile 1: +91 98791 03905

Email: sem@semtrainers.com

Website: www.semtrainers.com



Brain Stem Model, 3X Enlarged

Item No. MG32072

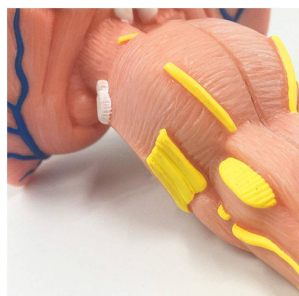
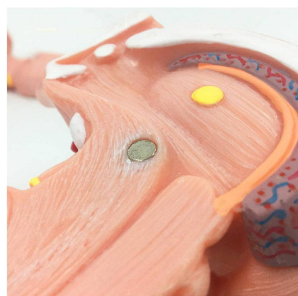
Weight 3.3 lbs

Make: Nasco Healthcare, USA

[Read More](#)

SKU:

Categories:Brain Models



Product Description

One-piece model, enlarged three times its natural size, displays in detail all the neurological pathways that leave the cranial and peripheral nerves. Important anatomical structures are numbered and indicated in different colors for easy understanding. Comes with an information card. Made with long-lasting synthetic material. Accompanying an interactive 3D anatomical model with augmented reality is a great tool to encourage learning and support. This platform allows students to engage in comparative

analysis of anatomical models as they compare and contrast the structure of individual organs. This initiative also provides a platform for continuing education, providing opportunities for all students to increase their knowledge of anatomy, physiology and pathophysiology. One-Year Warranty Ship Weight (LBs): 3.3 lbs. Dimensions. (Inches): 10.24 x 7.87 x 9.84