

**SEM**

SEM TRAINERS & SYSTEMS

WHERE TIME MOVES AHEAD TO KEEP PACE WITH KNOWLEDGE

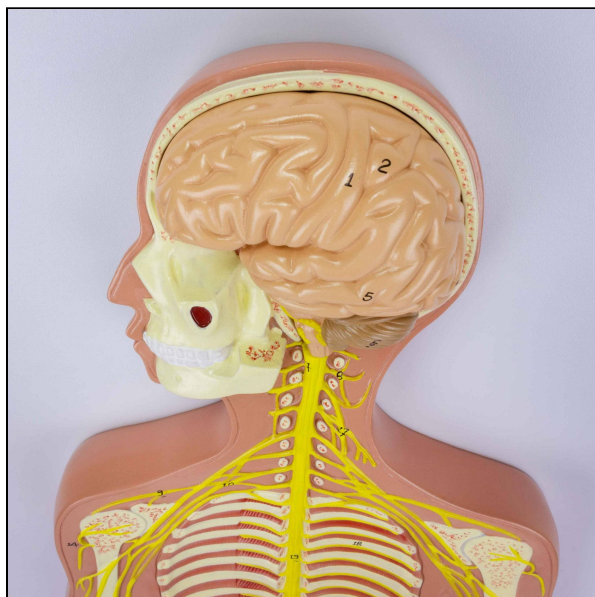
SEM- Scientific Educative Methods in Science, Engineering & Medicine

Mobile : +91 88495 63724

Mobile 1: +91 98791 03905

Email: sem@semtrainers.com

Website: www.semtrainers.com



Nervous System Model, Half Size

Item No. MG31333

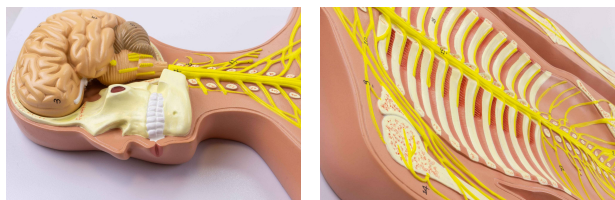
Weight 5.5 lbs

Make: Nasco Healthcare, USA

[Read More](#)

SKU:

Categories:Nervous System Models



Product Description

A half-life-size model that shows an overview of the human central and peripheral nervous system: the head is open and shows the brain and cerebellum; the pathway of the main nerves is well highlighted in relation to the skeleton. Important anatomical structures are numbered and indicated in different colors for easy understanding. Made with long-lasting synthetic material; Mounted on durable polymer base. Accompanying an interactive 3D anatomical model with augmented reality is a great tool to encourage learning and support. This platform allows students to engage in comparative analysis of anatomical models as they compare and contrast the structure of individual organs. This initiative also provides a platform for continuing education, providing opportunities for all students to increase their knowledge of

anatomy, physiology and pathophysiology. One-Year Warranty Ship Weight (LBs): 5.5 lbs. Dimensions.
(Inches): 36.22 x 12.99 x 5.91