



SEM

SEM TRAINERS & SYSTEMS

WHERE TIME MOVES AHEAD TO KEEP PACE WITH KNOWLEDGE

SEM- Scientific Educative Methods in Science, Engineering & Medicine

Mobile : +91 88495 63724

Mobile 1: +91 98791 03905

Email: sem@semtrainers.com

Website: www.semtrainers.com

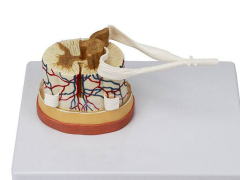
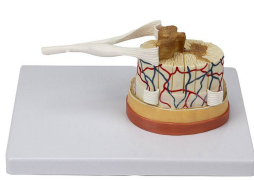
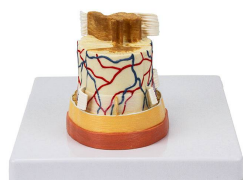
Spinal Cord with Nerve Endings, 6X Enlarged

Item No. MG34926
Weight 3.3 lbs
Make: Nasco Healthcare, USA

[Read More](#)

SKU:

Categories:Nervous System Models



Product Description

The model shows the structure of the spinal cord at approximately 6x magnification. The spinal cord is made up of the gray matter surrounding the central canal and the outer white matter. On the base, several cross-sections of the spinal cord of the neck, thorax and lumbar region are graphically represented, relating to the gray and white substances. Accompanying an interactive 3D anatomical model with augmented reality is a great tool to encourage learning and support. This platform allows

students to engage in comparative analysis of anatomical models as they compare and contrast the structure of individual organs. This initiative also provides a platform for continuing education, providing opportunities for all students to increase their knowledge of anatomy, physiology and pathophysiology. One-Year Warranty Ship Weight (LBs): 3.3 lbs. Dimensions. (Inches): 12.99 x 8.66 x 5.91