



SEM TRAINERS & SYSTEMS

WHERE TIME MOVES AHEAD TO KEEP PACE WITH KNOWLEDGE

SEM- Scientific Educative Methods in Science, Engineering & Medicine

Mobile : +91 88495 63724

Mobile 1: +91 98791 03905

Email: sem@semtrainers.com

Website: www.semtrainers.com

5th Cervical Vertebra, 7X Enlarged

Item No. MG30911

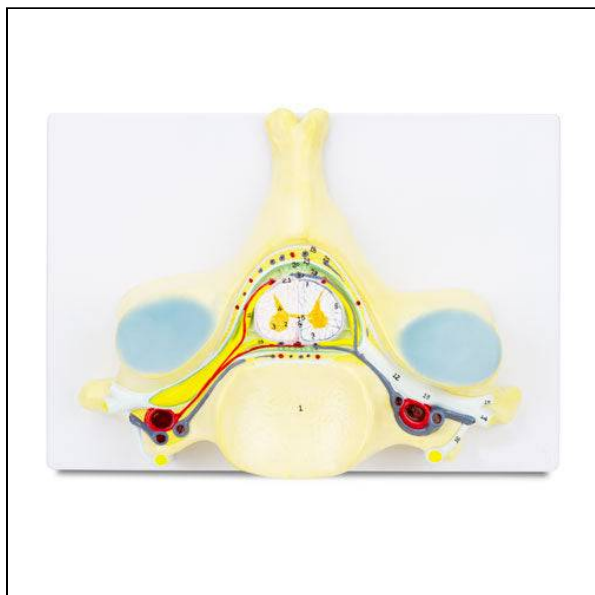
Weight 3.3 lbs

Make: Nasco Healthcare, USA

[Read More](#)

SKU:

Categories: Nervous System Models



Product Description

A model seven times life size that shows in detail the structure of the 5th cervical vertebra; a cross section of the spinal cord with gray and white matter, nerve branches, spinal ganglion, and blood vessels. Important anatomical structures are numbered and indicated in different colors for easy understanding. Made with long-lasting synthetic material. Accompanying an interactive 3D anatomical model with augmented reality is a great tool to encourage learning and support. This platform allows students to engage in comparative analysis of anatomical models as they compare and contrast the structure of individual organs. This initiative also provides a platform for continuing education, providing opportunities for all students to increase their knowledge of anatomy, physiology and pathophysiology. One-Year Warranty Ship Weight (LBs): 3.3 lbs. Dimensions. (Inches): 17.32 x 12.99 x 8.66