



SEM

SEM TRAINERS & SYSTEMS

WHERE TIME MOVES AHEAD TO KEEP PACE WITH KNOWLEDGE

SEM- Scientific Educative Methods in Science, Engineering & Medicine

Mobile : +91 88495 63724
Mobile 1: +91 98791 03905

Email: sem@semtrainers.com
Website: www.semtrainers.com



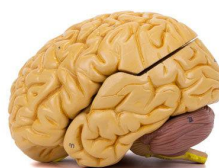
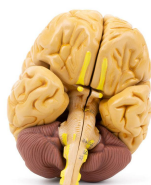
Classic Brain Model, 8-Parts

Item No. MG21719
Weight 3.3 lbs
Make: Nasco Healthcare, USA

[Read More](#)

SKU:

Categories:Brain Models



Product Description

Mid-section human brain model with high level of detail. All parts are connected via magnets. Both

halves can be separated showing in detail the frontal lobe with parietal temporal lobes with occipital half of the brain stem and cerebellum. Available on base. Accompanying an interactive 3D anatomical model with augmented reality is a great tool to encourage learning and support. This platform allows students to engage in comparative analysis of anatomical models as they compare and contrast the structure of individual organs. This initiative also provides a platform for continuing education providing opportunities for all students to increase their knowledge of anatomy physiology and pathophysiology. One-Year Warranty Ship Weight (LBs): 3.3 lbs. Dimensions. (Inches): 8.27 x 6.3 x 11.81