



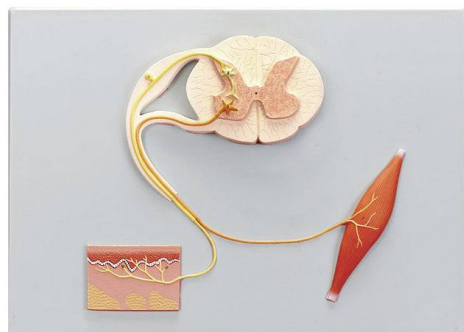
## SEM TRAINERS & SYSTEMS

WHERE TIME MOVES AHEAD TO KEEP PACE WITH KNOWLEDGE

SEM- Scientific Educative Methods in Science, Engineering & Medicine

**Mobile :** +91 88495 63724  
**Mobile 1:** +91 98791 03905

**Email:** sem@semtrainers.com  
**Website:** www.semtrainers.com



## Sensory, Neural, & Motor Elements Model

Item No. MG22756  
Weight 2.2 lbs  
Make: Nasco Healthcare, USA

[Read More](#)

**SKU:**

**Categories:**Nervous System Models

## Product Description

Model showing the sensory, neural and motor elements of a somatic reflex arc cell. Made with long-lasting synthetic material. Mounted on durable polymer base; Accompanying an interactive 3D anatomical model with augmented reality is a great tool to encourage learning and support. This platform allows students to engage in comparative analysis of anatomical models as they compare and contrast the structure of individual organs. This initiative also provides a platform for continuing education, providing opportunities for all students to increase their knowledge of anatomy, physiology and pathophysiology. One-Year Warranty Ship Weight (LBs): 2.2 lbs. Dimensions. (Inches): 23.62 x 18.11 x 6.3