



SEM

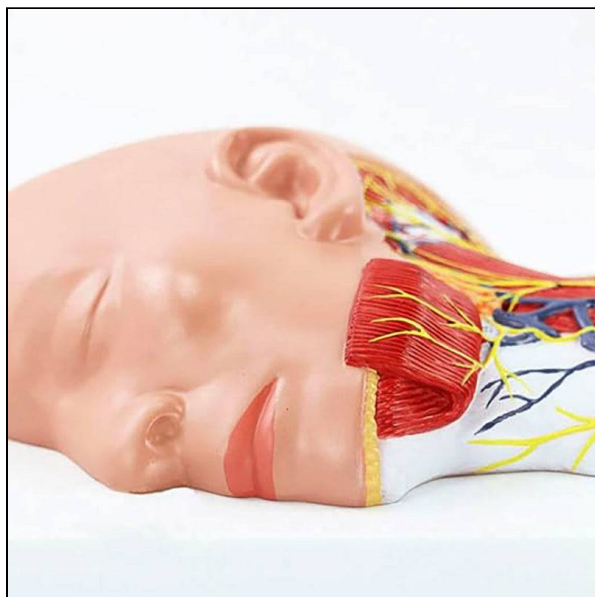
SEM TRAINERS & SYSTEMS

WHERE TIME MOVES AHEAD TO KEEP PACE WITH KNOWLEDGE

SEM- Scientific Educative Methods in Science, Engineering & Medicine

Mobile : +91 88495 63724
Mobile 1: +91 98791 03905

Email: sem@semtrainers.com
Website: www.semtrainers.com



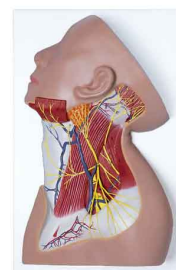
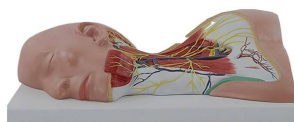
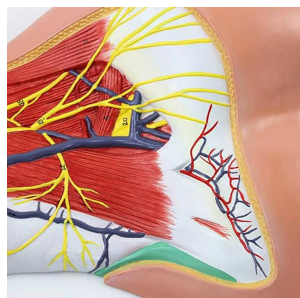
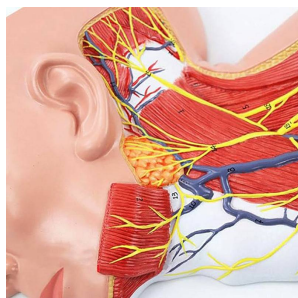
Neck Muscles with Nerves Model

Item No. MG29872
Weight 4.4 lbs
Make: Nasco Healthcare, USA

[Read More](#)

SKU:

Categories: Nervous System Models



Product Description

A life-size model that shows the distribution of the superficial branching of the cervical plexus. Important anatomical structures are numbered and indicated in different colors for easy understanding. Made with long-lasting synthetic material. Mounted on durable polymer base; Accompanying an interactive 3D anatomical model with augmented reality is a great tool to encourage learning and support. This platform allows students to engage in comparative analysis of anatomical models as they

compare and contrast the structure of individual organs. This initiative also provides a platform for continuing education, providing opportunities for all students to increase their knowledge of anatomy, physiology and pathophysiology. One-Year Warranty Ship Weight (LBs): 4.4 lbs. Dimensions. (Inches): 17.32 x 12.99 x 8.66