



**SEM**

## SEM TRAINERS & SYSTEMS

WHERE TIME MOVES AHEAD TO KEEP PACE WITH KNOWLEDGE

SEM- Scientific Educative Methods in Science, Engineering & Medicine

**Mobile :** +91 88495 63724

**Mobile 1:** +91 98791 03905

**Email:** sem@semtrainers.com

**Website:** www.semtrainers.com

## Eye Model, 5X Enlarged, 4-Parts

Item No. MG29940

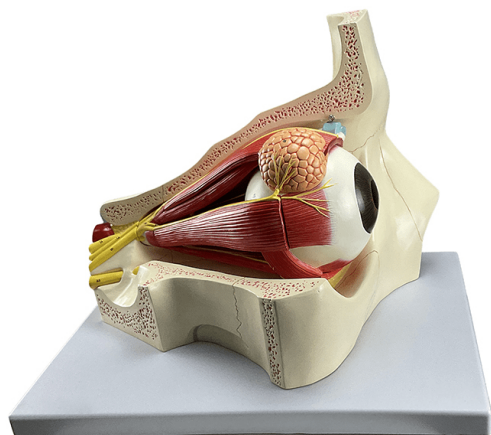
Weight 7.7 lbs

Make: Nasco Healthcare, USA

[Read More](#)

**SKU:**

**Categories:** Eye Models



### Product Description

Model is five times life size and shows the eyeball with optic nerves and muscles in their natural position in the bony orbit. Removable parts: Lateral rectus muscle, Levator eyelid and Superior muscle together with the lacrimal gland; Eyeball with extrinsic eye muscles; The base of the bony orbit. Made with long-lasting synthetic material. Mounted on durable polymer base with bracket; Accompanying an interactive 3D anatomical model with augmented reality is a great tool to encourage learning and support. This platform allows students to engage in comparative analysis of anatomical models as they compare and contrast the structure of individual organs. This initiative also provides a platform for continuing education, providing opportunities for all students to increase their knowledge of anatomy, physiology and pathophysiology. One-Year Warranty Ship Weight (LBs): 7.7 lbs. Dimensions. (Inches): 17.32 x 12.99 x 20.08